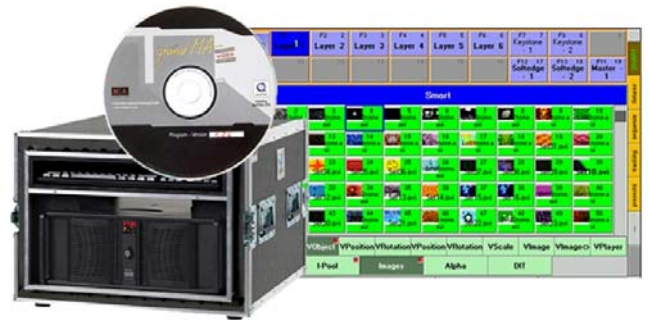


# grandMA video

– fully integrated media server

*grandMA video is a software based media server, for controlling, live-accessing and altering video, still images and 3D-Objects in real-time via any grandMA console. Bidirectional communication between the grandMA console and grandMA video with all its advantages is possible using the MA-Net. grandMA video provides complete scalability of its range of functions. At a maximum each grandMA video application will use up to 239 parameters when working with six 3D-video-layers, one master layer and one keystone layer.*



**Technical Specification – Art.-No. 120330 (Software incl. Dongle for 1 Video Station)**  
**Art.-No. 120371 (Software incl. Dongle for 3 Video Stations)**  
**Art.-No. 120372 (Software incl. Dongle for 10 Video Stations)**  
**Art.-No. 120336 (MA mediaPC)**

## Software Specification

**3D-video-layer:** up to 32 3D-video-layers with full effects capabilities for high-resolution projections (e.g. 1,024 x 768)

**Master Layer:** 1 layer for shaper effects, iris effects and PC remote control

**Live Video-Input:** 4

**Supported Formats:** \*.jpg, \*.bmp, \*.gif, \*.dib, \*.jpeg, \*.jif, \*.tif, \*.eps, \*.tga sowie \*.pct & \*.avi, \*.mov, \*.mpeg

## Software Features

Keystoning  
 Layer Effects  
 Softfeding  
 Pixel Mapper  
 Multipreview

## Advanced Features

- grandMA video is a fully integrated part of the grandMA Network session
- Up to 31 grandMA video stations in one grandMA network session
- Sniffer Mode: listenonly-mode which allows even more grandMA video stations in 1 session
- Synchronization of all stations via the MA-Net
- Straightforward setup and configuration
- Frame-synchronous control due to the MA-Net
- Only 1 additional grandMA video station affordable as Backup (due to the MA-Net)
- Blind Programming support
- Instant live-access from the grandMA console to any kind of image, 3D-Object or video
- Up to 255 folders with max. 255 files each
- Content Browsing via the grandMA console

- Preview with Thumbnails
- Uploading content without restarting the system
- Central administration: grandMA video admin is an additional application automatically installed with the grandMA video software for monitoring and accessing any connected video Station
- Incl. 3 DVDs with more than 18 GB media content, including high resolution video files, masks, textures, digital gobos, video and still images
- Bluff-Titlet, MS DirectX9<sup>®</sup> software for creating 3D-text animations

## ***Detailed Software Features***

### 3D-video layer effects

- Video Objects: any kind of 3D object
- Content: Textures, still images, video files, Colour Keying masks
- Dimmer: Transparency
- Colour Mix: additive CMY colour mixing
- Darkness: unlike the dimmer to darken the image
- DIT (Dark is transparent): dark values of the image will become transparent
- Object control:
- 3D xyz position/rotation/scale
- 3D xyz position/rotation animation
- Video control:
- Splitting and Offset
- XY animation
- Various playmodes
- Speed
- In/Outpoint
- Indexing

### Master Layer Effects

- Iris
- Shaper, 4 shapers, each with 2 channels
- Camera Position: 3D xyz position
- Control:
- Remote Shutdown/Restart
- Remote Fullscreen
- Remote Sniffer/Slave Mode
- Remote Pixel Mapper On/Off

### Keystone Layer

- Shaper, 4 shapers, each with 2 channels
- Keystone Correction: xy correction

### Softedge Layer

- Shaper, 4 shapers, each with 2 channels
- Camera Position: XY position, to correctly position 3D objects

### grandMA video admin

grandMA video admin is an useful tool for monitoring and accessing any grandMA video application connected to the network. All video stations are shown in one window. This central element gives an overview of the status of any connected application and allows the adjustment of the following parameters:

- Fixture Layer ID
- Soft Edge ID
- Position (Grid XY)
- Blade Mode (Keystone)
- Start in Fullscreen
- Show FPS
- Allow Invite
- Aspect Ratio
- Content Handling (Fast Load/Slow Render, Balanced, Fast Render/Slow Load)
- Iris resolution

### Blind Programming

grandMA video can follow the blind programming of the grandMA console for the preparation of the next cue without having an effect on the current output.

### Pixelmapping

This feature allows output of any video file or still image to DMX controlled LEDs like Video Walls or any other DMX fixture - controlled by the grandMA console. First of all a layout is created, where the size of the overall output and the dimensions of the pixel output are defined. Now the user can put any Pixel Mapper fixtures into that layout, which will then finally display the corresponding part of the video. The resolution may be adjusted by changing the parameters of the pixel output. The fixtures may also be relocated and even rotated after creating and patching. The grandMA video server outputs the DMX values of the pixel colour and intensity over Ethernet via Art-Net to the LED fixtures.

### Hardware Specification of the MA mediaPC

4RU 19" Housing

incl. Case:

**Size:** 700 x 414 x 583 mm (27,6" x 16,3" x 22,9")

**Weight:** 48 kg / 106 lbs

### Hardware Components [November 2006]

**Operating System:** MS Windows XP®

**Main Board CPU:** Q9550 Quadcore, 2x6MB L2-RAM

**Motherboard:** Gigabyte GA-P35-DS3P

**Main Memory:** 2x 1024MB DDR II FSB 800

**Hard Drive:** 3xSATA2 160 GB HDD 7200 rpm,

C:\ OS, D:\Raid 0

**Network Card:** 10/100/1000 Mbps

**Graphics Card:** Nvidia 9800 GTX, 512 MB

**DVD Burner:** NEC DVD ND5351

**Floppy Drive**

**Power Supply:** Seasonic S12+, 650W

### Physical Input / Output

**Network:** 2x100 BaseTX, RJ45

**Output:** 1x VGA / 1x DVI

**USB:** 6x

**PS2:** 2x

**IEEE 1394:** 2x 6pin

The MA mediaPC is road-proof: all connectors and cabling are specially secured and the motherboard, graphics card and PCI-slots are strongly fixed and sealed. The three Hard Drives are all shock mounted.

### Accessory Hardware:

Case for MA mediaPC (200174)

#### Input:

DeckLink HD Extreme PCIe Capture Card (120383)

Datapath RGB-PRO1 RGB Capture Card (120381)

Datapath RGB-PRO2 RGB Capture Card (120382)

Osprey-440 Capture Card (120386)

#### Output:

Folsom ImagePRO-HD Signal Processor (120384)

TV ONE C2-5200 Video Processor (120385)



MA Lighting International GmbH  
An der Talle 24-28  
33102 Paderborn  
Germany

Phone +49 5251 688865-10

Fax +49 5251 688865-88