

P R O D U C T G U I D E 2 0 0 9

ANOLIS was established to design and manufacture top-end LED lighting products.

Since its conception, ANOLIS has gone from strength to strength, producing a constantly expanding range of products with a well balanced mix of innovation, imagination and experience. This, together with state-of-the-art lighting technology, has created a market leading range.

Reliability is the first priority. ANOLIS uses only the highest quality components and precision manufacturing techniques, ensuring that the brand offers all the benefits associated with LED lighting: extreme efficiency, long life, low maintenance, low heat and no UV output.

Combining these characteristics with industry standard dimensions and flexible control options, true specifier-class lighting systems can be created.

ANOLIS products can be seen in a wide variety of applications worldwide, and embrace many market sectors including architectural, commercial, industrial, transport, retail, domestic and entertainment lighting.

From discreet white colour-controlled accent lighting to full RGB building illumination, ANOLIS products present lighting designers and architects with creative solutions for the most demanding client requirements.

All ANOLIS products meet the relevant product directives and bear the CE mark. Some also bear the ETL Mark, and approval for the remaining products is currently pending.

Maintaining a close working relationship with the leading component manufacturers ensures that ANOLIS stays at the forefront of the ever-evolving LED market. New technologies are constantly allowing higher output and greater efficiency which continues to open up new market opportunities.

ANOLIS is the professional choice - both now and for the future.

ArcSource 3, 6, 6, 7 (MR16)





ArcSource 3, 6, 7 (MR16)

The Anolis ArcSource 3 RGB, 6 RGB, 7 RGBW combines state of the art lighting technology with industry standard MR16 fittings to create truly specifier class lighting systems. Using only the finest materials and precision manufacturing techniques the Anolis ArcSource 3 RGB, 6 RGB, 7 RGBW provides the professional solution for your lighting requirements.

The highest quality interchangeable optical system ensures that the desired effect can be achieved in the widest range of application possibilities. Utilising high powered Luxeon Emitters the Anolis ArcSource 3 RGB, 6 RGB, 7 RGBW is unsurpassed in performance, reliability and quality.

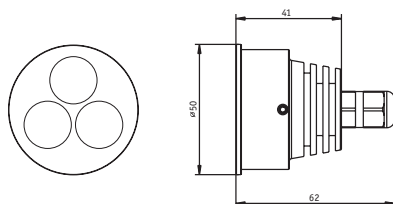


TECHNICAL SPECIFICATIONS:

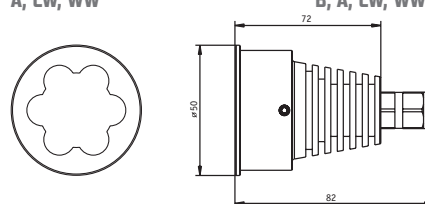
	ArcSource 3	ArcSource 6	ArcSource 7
Max input current:	350 mA	350 mA	350 mA
Maximum Power Consumption:	4.2 Watts	8.4 Watts	9.6 Watts
Compatible Power Supplies:	ArcPower 36, 72, 144, 360 ArcPower 16x6	ArcPower 36, 72, 144, 360 ArcPower 16x6	ArcPower 36, 72, 144, 360 ArcPower 16x6
Compatible Power Supplies for single colour variants:	ArcPower SmartWhite 36, 72, 144	ArcPower SmartWhite 36, 72, 144	ArcPower SmartWhite 36, 72, 144
Operating Ambient Temp.Range:	-20°C/+40°C	-20°C/+40°C	-20°C/+40°C
Operating Temperature:	+50°C @ ambient 25°C	+56°C @ ambient 25°C	+60°C @ ambient 25°C
Cooling System:	convection	convection	convection
Optical Systems Available:	6°, 15°, 25°, 38°	6°, 25°	6°, 25°
LED Device:	1Watt Luxeon	1 Watt Luxeon	1 Watt Luxeon
Warm White LEDs (WW):	3300 K	3300 K	3300 K
Cool White LEDs (CW):	6500 K	6500 K	6500 K
Typical Lumen Maintenance:	70% @ 50.000 hours	70% @ 50.000 hours	70% @ 50.000 hours
Led Life Expectancy:	minimum 50.000 hours	minimum 50.000 hours	minimum 50.000
Construction:	precision turned alluminium	precision turned alluminium	precision turned alluminium
Weight:	0.15 kg	0.25 kg	0.25 kg
Installation method:	standard MR16 housings	standard MR16 housings	standard MR16 housings
Ingress Protection:	IP 2X	IP 2X	IP 2X
Flammability:	94V-0 flame class rating	94 V-2 flame class rating	94V-2 flame class rating
Power/Data plug:	RJ45	RJ45	RJ45
Power/Data cable:	24 AWG x 4P; cat. 5e; 1.5m long	24 AWG x 4P; cat. 5e; 1.5m long	24 AWG x 4P; cat. 5e; 1.5m long
Accessories:	Diffuser, MR16-Down Light Fitting	Diffuser, MR16-Down Light Fitting	Diffuser, MR16-Down Light Fitting

LED Colour Variants:

RGB, R, G, B, A, CW, WW



RGB, RGBWW, RGBCW, R, G, B, A, CW, WW



RGBCW, RGBWW, R, G, B, A, CW, WW





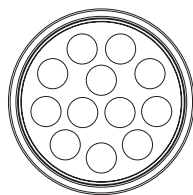
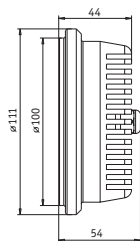
ArcSource 12 (AR1-11)

The Anolis ArcSource 12 combines state of the art lighting technology within an industry standard AR1-11 size fitting to create a truly specifier class lighting product. The highest quality optical system ensures that the desired effect can be achieved in the widest range of applications possible. Utilising high powered Luxeon emitters the Anolis ArcSource 12 RGB is unsurpassed in performance, reliability and quality. By combining both RGB and Warm White Luxeon LED's the Anolis ArcSource 12 WW RGB provides a truly versatile solution for today's demanding installations. With a colour temperature of 3200K the Warm White LED's offer an alternative to conventional halogen lighting. By utilising the RGB LED's full effect colour changing can be achieved from the same compact fitting.

TECHNICAL SPECIFICATIONS:

Max. input current:	350 mA
Maximum Power Consumption:	13.6 Watts
Compatible Power Supplies:	ArcPower 36, 72, 144, 360
Compatible Power Supplies for single colour variants:	ArcPower SmartWhite 36, 72, 144
Operating Ambient Temp.Range:	-20°C/+40°C
Operating Temperature:	+60°C @ ambient 25°C
Cooling System:	convection
Optical Systems Available:	6°, 15°, 25°, 38°
LED Device:	1 Watt Luxeon
Warm White LEDs (WW):	3300 K
Cool White LEDs (CW):	6500 K
Typical Lumen Maintenance:	70% @ 50.000 hours
Led Life Expectancy:	minimum 50.000 hours
Construction:	precision turned aluminium
Weight:	0.6 kg
Installation method:	standard AR1-11 housings
Ingress Protection:	IP 2X
Flammability:	94V-0 flame class rating
Power/Data plug:	RJ45
Power/Data cable:	24 AWG x 4P; category 5e

LED Colour Variants: RGB, RGBWW, RGBCW, R, G, B, A, CW, WW







ArcLine 12, 18, 24, 36

The Anolis ArcLine combines state of the art lighting technology with a balanced design profile to create truly specifier class lighting systems. Using only the finest materials and precision manufacturing techniques the Anolis ArcLine provides the professional solution for your lighting requirements.

The highest quality wide angle LEDs ensures that a constant effect is delivered in the widest range of applications possibilities. Utilizing high powered Luxeon Emitters the Anolis ArcLine is unsurpassed in performance, reliability and quality.



TECHNICAL SPECIFICATIONS:

	ArcLine 12	ArcLine 18	ArcLine 24	ArcLine 36
Max. input current:	350 mA	350 mA	350 mA	350 mA
Maximum Power Consumption:	13.6 Watts	20.4 Watts	27.2 Watts	40.8 Watts
Compatible Power Supplies:	ArcPower 36, 72, 144, 360	ArcPower 36, 72, 144, 360	ArcPower 36, 72, 144, 360	ArcPower 36, 72, 144, 360
Compatible Power Supplies for single colour variants:	ArcPower SW 36, 72, 144	ArcPower SW 36, 72, 144	ArcPower SW 36, 72, 144	ArcPower SW 36, 72, 144
Operating Ambient Temp.Range:	-20°C/+40°C	-20°C/+40°C	-20°C/+40°C	-20°C/+40°C
Operating Temperature:	+50°C @ ambient 25°C	+50°C @ ambient 25°C	+50°C @ ambient 25°C	+50°C @ ambient 25°C
Cooling System:	convection	convection	convection	convection
Optical System:	170°	170°	170°	170°
LED Device:	1 Watt Luxeon	1 Watt Luxeon	1 Watt Luxeon	1 Watt Luxeon
Warm White LEDs (WW):	3300 K	3300 K	3300 K	3300 K
Cool White LEDs (CW):	6500 K	6500 K	6500 K	6500 K
Typical Lumen Maintenance:	70% @ 50.000 hours	70% @ 50.000 hours	70% @ 50.000 hours	70% @ 50.000 hours
Led Life Expectancy:	minimum 50.000 hours	minimum 50.000 hours	minimum 50.000	minimum 50.000
Construction:	precision extruded alluminium	precision extruded alluminium	precision extruded alluminium	precision extruded alluminium
Weight:	0.6 kg	0.8 kg	1.0 kg	1.5 kg
Power/data cable connection:	rear or side	rear or side	rear or side	rear or side
Installation method:	integral universal mounting system	integral universal mounting system	integral universal mounting system	integral universal mounting system
Ingress Protection:	IP 2X	IP 2X	IP 2X	IP 2X
Flammability:	94HB flame class rating	94HB flame class rating	94HB flame class rating	94HB flame class rating
Power/Data plug:	RJ45	RJ45	RJ45	RJ45
Power/Data cable:	24 AWG x 4P; category 5e; 1.5 m long	24 AWG x 4P; category 5e; 1.5 m long	24 AWG x 4P; category 5e; 1.5 m long	24 AWG x 4P; category 5e; 1.5 m long

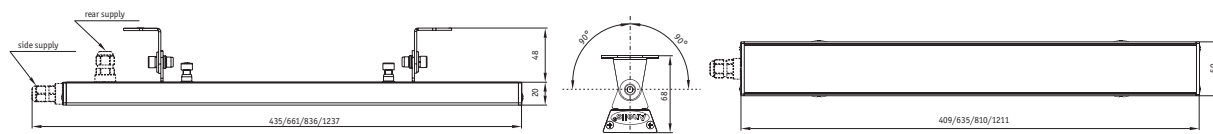
LED Colour Variants: RGB, R, G, B, A, CW, WW

LED Colour Variants: RGB, R, G, B, A, CW, WW

LED Colour Variants: RGB, R, G, B, A, CW, WW

LED Colour Variants: RGB, R, G, B, A, CW, WW

Other dimensional and colour variants on request.







ArcLine Optic 12, 18, 24, 36

The Anolis ArcLine Optic combines state of the art lighting technology with a balanced design profile to create truly specifier class lighting systems. Using only the finest materials and precision manufacturing techniques the Anolis ArcLine Optic provides the professional solution for your lighting requirements.

The highest quality interchangeable optical system ensures that the desired effect can be achieved in the widest range of application possibilities. Utilising high powered Luxeon Emitters the Anolis ArcLine Optic is unsurpassed in performance, reliability and quality.



TECHNICAL SPECIFICATIONS:

	ArcLine Optic 12	ArcLine Optic 18	ArcLine Optic 24	ArcLine Optic 36
Max. input current:	350 mA	350 mA	350 mA	350 mA
Maximum Power Consumption:	13.6 Watts	20.4 Watts	27.2 Watts	40.8 Watts
Compatible Power Supplies:	ArcPower 36, 72, 144, 360	ArcPower 36, 72, 144, 360	ArcPower 36, 72, 144, 360	ArcPower 36, 72, 144, 360
Compatible Power Supplies for single colour variants:	ArcPower SW 36, 72, 144	ArcPower SW 36, 72, 144	ArcPower SW 36, 72, 144	ArcPower SW 36, 72, 144
Operating Ambient Temp. Range:	-20°C/+40°C	-20°C/+40°C	-20°C/+40°C	-20°C/+40°C
Operating Temperature:	+50°C @ ambient 25°C	+50°C @ ambient 25°C	+50°C @ ambient 25°C	+50°C @ ambient 25°C
Cooling System:	convection	convection	convection	convection
Optical System:	6°, 15°, 25°, 25°x6°, 38°	6°, 15°, 25°, 25°x6°, 38°	6°, 15°, 25°, 25°x6°, 38°	6°, 15°, 25°, 25°x6°, 38°
LED Device:	1 Watt Luxeon	1 Watt Luxeon	1 Watt Luxeon	1 Watt Luxeon
Warm White LEDs (WW):	3300 K	3300 K	3300 K	3300 K
Cool White LEDs (CW):	6500 K	6500 K	6500 K	6500 K
Typical Lumen Maintenance:	70% @ 50.000 hours	70% @ 50.000 hours	70% @ 50.000 hours	70% @ 50.000 hours
Led Life Expectancy:	minimum 50.000 hours	minimum 50.000 hours	minimum 50.000	minimum 50.000
Construction:	precision extruded alluminium	precision extruded alluminium	precision extruded alluminium	precision extruded alluminium
Weight:	0.75 kg	1.05 kg	1.3 kg	1.9 kg
Power/data cable connection:	rear or side	rear or side	rear or side	rear or side
Installation method:	integral universal mounting system	integral universal mounting system	integral universal mounting system	integral universal mounting system
Ingress Protection:	IP 2X	IP 2X	IP 2X	IP 2X
Flammability:	94HB flame class rating	94HB flame class rating	94HB flame class rating	94HB flame class rating
Power/Data plug:	RJ45	RJ45	RJ45	RJ45
Power/Data cable:	24 AWG x 4P; category 5e; 1.5 m long	24 AWG x 4P; category 5e; 1.5 m long	24 AWG x 4P; category 5e; 1.5 m long	24 AWG x 4P; category 5e; 1.5 m long

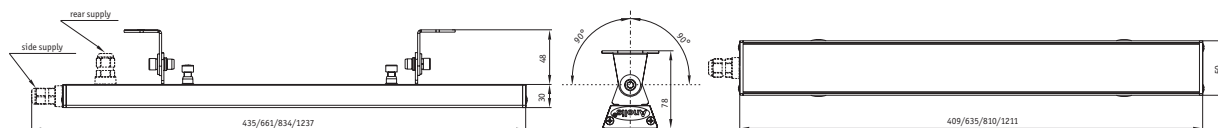
LED Colour Variants: RGB, R, G, B, A, CW, WW

LED Colour Variants: RGB, R, G, B, A, CW, WW

LED Colour Variants: RGB, R, G, B, A, CW, WW

LED Colour Variants: RGB, R, G, B, A, CW, WW

Other dimensional and colour variants on request.





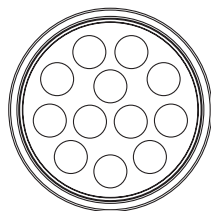
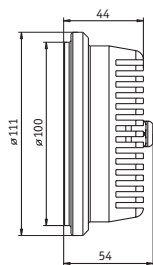


ArcSource 12 SmartWhite (AR1-11)

Combining industry standard AR1-11 size fittings with a combination of the latest warm white and cold white Luxeon LED's and using Anolis digital control a whole range of variable colour temperature white light can be achieved from a single compact fixture. Dynamic retail displays can be maximised by illuminating at the correct colour temperature as well as creating an adjustable ambience to both leisure and domestic environments.

TECHNICAL SPECIFICATIONS:

Max. input current:	350 mA
Maximum Power Consumption:	13.6 Watts
Compatible Power Supplies:	ArcPower SmartWhite 36, 72, 144
Operating Ambient Temp.Range:	-20°C/+40°C
Operating Temperature:	+60°C @ ambient 25°C
Cooling System:	convection
Optical Systems Available:	6°, 15°, 25°, 38°
LED Device:	1 Watt Luxeon
Warm White LEDs:	3300 K
Cool White LEDs:	6500 K
Typical Lumen Maintenance:	70% @ 50.000 hours
Led Life Expectancy:	minimum 50.000 hours
Construction:	precision turned alluminium
Weight:	0.6 kg
Installation method:	standard AR1-11 housings
Ingress Protection:	IP 2X
Flammability:	94 V-0 flame class rating
Power/Data plug:	RJ45
Power/Data cable:	24 AWG x 4P; category 5e; 1.5m long



ArcLine Optic 12, 24, 36 SmartWhite





ArcLine Optic 12, 24, 36 SmartWhite

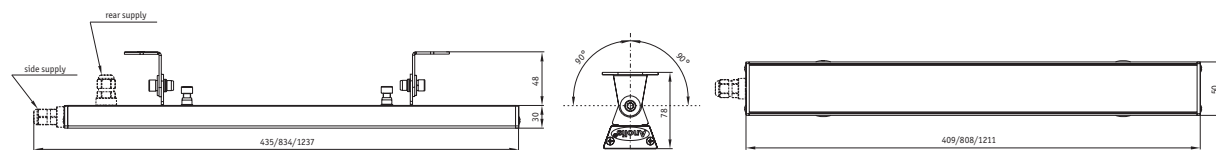
When colour rendering is of high importance the ArcLine Optic Smart White provides the solution combining both warm white and cold white high powered Luxeon LED's with Anolis digital control a full range of white light from 3200K to 6500K can be achieved.

All this technology is combined with the balanced design profile of the Anolis ArcLine Optic with the highest quality optics to create truly versatile linear lighting system whatever the environment demands.



TECHNICAL SPECIFICATIONS:

	ArcLine Optic 12 SmartWhite	ArcLine Optic 24 SmartWhite	ArcLine Optic 36 SmartWhite
Max. input current:	350 mA	350 mA	350 mA
Maximum Power Consumption:	13.6 Watts	27.2 Watts	40.8 Watts
Compatible Power Supplies:	ArcPower SmartWhite 36, 72, 144	ArcPower SmartWhite 36, 72, 144	ArcPower SmartWhite 36, 72, 144
Operating Ambient Temp. Range:	-20°C/+40°C	-20°C/+40°C	-20°C/+40°C
Operating Temperature:	+50°C @ ambient 25°C	+50°C @ ambient 25°C	+50°C @ ambient 25°C
Cooling System:	convection	convection	convection
Optical System:	6°, 15°, 25°, 25°x6°, 38°	6°, 15°, 25°, 25°x6°, 38°	6°, 15°, 25°, 25°x6°, 38°
LED Device:	1 Watt Luxeon	1 Watt Luxeon	1 Watt Luxeon
Warm White LEDs:	3300 K	3300 K	3300 K
Cool White LEDs:	6500 K	6500 K	6500 K
Typical Lumen Maintenance:	70% @ 50.000 hours	70% @ 50.000 hours	70% @ 50.000 hours
Led Life Expectancy:	minimum 50.000 hours	minimum 50.000	minimum 50.000
Construction:	precision extruded alluminium	precision extruded alluminium	precision extruded alluminium
Weight:	0.75 kg	1.3 kg	1.9 kg
Power/data cable connection:	rear or side	rear or side	rear or side
Installation method:	integral universal mounting system	integral universal mounting system	integral universal mounting system
Ingress Protection:	IP 2X	IP 2X	IP 2X
Flammability:	94HB flame class rating	94HB flame class rating	94HB flame class rating
Power/Data plug:	RJ45	RJ45	RJ45
Power/Data cable:	24 AWG x 4P; category 5e; 1.5 m long	24 AWG x 4P; category 5e; 1.5 m long	24 AWG x 4P; category 5e; 1.5 m long



ArcSource 3/K2, 12/K2





ArcSource 3/K2, 12/K2

When extremely high light levels are required due to demanding ambient environments Luxeon K2 LED's can be added to most of the ArcSource Range. The latest edition to the Luxeon high power LED family brings unsurpassed performance to the Arc Source Range. With a variety of drive options available depending on the light output required the ArcSource K2 Range can now be applied to the most demanding applications.



TECHNICAL SPECIFICATIONS:

Max. input current:
Total max. power consumption:
Compatible power supplies:
Compatible power supplies
for SW and single colour variants:
Light Source:
Led life expectancy:
Typical lumen maintenance:
Optical system available:
Housing:
Weight:
Cooling:
Ingress protection:
Flammability:
Ambient temp.range:
Power/Data plug:
Power/Data cable:

ArcSource 3/K2

700mA
7.6 Watts
ArcPower 36/K2, ArcPower 72/K2

ArcPower SmartWhite 36/K2, 72/K2
3 x Luxeon K2
minimum 60.000 hours
70% @ 60.000 hours
6°, 15°, 25°, 38°
precision turned alluminium
0.25 kg
convection
IP 2X
94V-0 flame class rating
-20°C/+35°C
RJ45
type: 24 AWG x 4P, category 5e,
1.5 m long

ArcSource 12/K2

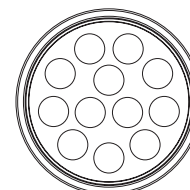
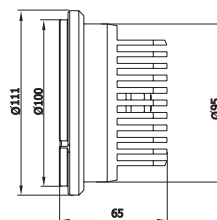
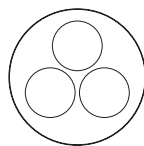
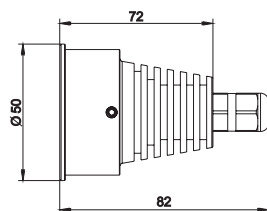
700mA
30 Watts
ArcPower 36/K2, ArcPower 72/K2

ArcPower SmartWhite 36/K2, 72/K2
12 x Luxeon K2
minimum 60.000 hours
70% @ 60.000 hours
6°, 15°, 25°, 38°
precision turned alluminium
0.6 kg
convection
IP 2X
94V-0 flame class rating
-20°C/+35°C
RJ45
type: 24 AWG x 4P, category 5e,
1.5 m long

LED Colour Variants:

RGB, R, G, B, WW, CW

G, B, WW, CW, SW



ArcLink 3, ArcLink Optic 3





ArcLink 3, ArcLink Optic 3

The perfect companion to the ArcLine range ArcLink 3 RGB/ArcLink Optic 3 RGB adds a flexible dimension to linear LED lighting combining the latest Luxeon high powered LED's with simple CAT 5 connection and complete with heat sink for thermal management the compact 100mm unit ArcLink 3 RGB/ArcLink Optic 3 RGB can be installed virtually anywhere, including curved cove lighting and even concealed within furniture or fittings.



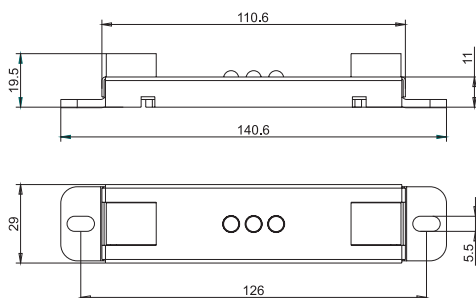
TECHNICAL SPECIFICATIONS:

ArcLink 3

Max. input current:	350 mA
Maximum Power Consumption:	3.4 Watts
Compatible Power Supplies:	ArcPower 36, 72, 144, 360
Compatible Power Supplies for single colour variants:	ArcPower SmartWhite 36, 72, 144
Operating Ambient Temp. Range:	-20°C/+40°C
Operating Temperature:	+50°C @ ambient 25°C
Cooling System:	convection
Optical System:	170°
LED Device:	1 Watt Luxeon
Warm White LEDs (WW):	3300 K
Cool White LEDs (CW):	6500 K
Typical Lumen Maintenance:	70% @ 50.000 hours
Led Life Expectancy:	minimum 50.000 hours
Construction:	aluminium base
Weight:	0.05 kg
Power/Data plug:	RJ45
Accessories:	patch cables, termination plug

LED Colour Variants:

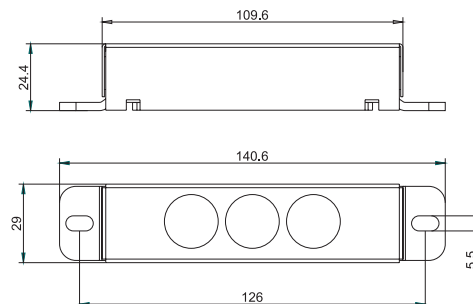
RGB, WWACW, WWAWW, CW, WW, R, G, B, A



ArcLink Optic 3

Max. input current:	350 mA
Maximum Power Consumption:	3.4 Watts
Compatible Power Supplies:	ArcPower 36, 72, 144, 360
Compatible Power Supplies for single colour variants:	ArcPower SmartWhite 36, 72, 144
Operating Ambient Temp. Range:	-20°C/+40°C
Operating Temperature:	+50°C @ ambient 25°C
Cooling System:	convection
Optical System:	6°, 15°, 25°, 25°x6°, 38°
LED Device:	1 Watt Luxeon
Warm White LEDs (WW):	3300 K
Cool White LEDs (CW):	6500 K
Typical Lumen Maintenance:	70% @ 50.000 hours
Led Life Expectancy:	minimum 50.000 hours
Construction:	aluminium base
Weight:	0.05 kg
Power/Data plug:	RJ45
Accessories:	patch cables, termination plug

RGB, WWACW, WWAWW, CW, WW, R, G, B, A



ArcLink 4, ArcLink 4 Optic





ArcLink 4, ArcLink Optic 4

Designed to compliment the existing ArcLink 3 and ArcLink3 Optic the ArcLink 4 and ArcLink4 Optic allow you to add even more creativity, by utilising the latest high power LED technology in and RGB/W or RGB/A format even greater colour ranges are able to be produced, also available in SmartWhite as well as combinations of Amber and White LED's variable colour temperature white lighting is achievable.

Based on the compact design of the ArcLink/Optic 3 and built to the same demanding high standards with built in heatsinking and plug and play CAT5 connectors, the Anolis ArcLink 4 is the smart choice for a variety of installation requirements including concealed cove lighting, curved cove lighting and can also be built into shopfittings and furniture.



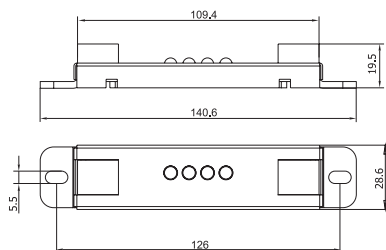
TECHNICAL SPECIFICATIONS:

ArcLink 4

Max. input current:	350 mA
Maximum Power Consumption:	4.5 W
Compatible Power Supplies:	ArcPower 36, 72, 144, 360
Compatible Power Supplies for single colour variants:	ArcPower SmartWhite 36, 72, 144
Operating Ambient Temp. Range:	-20°C/+40°C
Operating Temperature:	+50°C @ ambient 25°C
Cooling System:	convection
Optical System:	170°
LED Device:	1 Watt Luxeon
Warm White LEDs (WW):	3300 K
Cool White LEDs (CW):	6500 K
Typical Lumen Maintenance:	70% @ 50.000 hours
Led Life Expectancy:	minimum 50.000 hours
Construction:	aluminium base
Weight:	0.05 kg
Power/Data plug:	RJ45
Accessories:	patch cables, termination plug

LED Colour Variants:

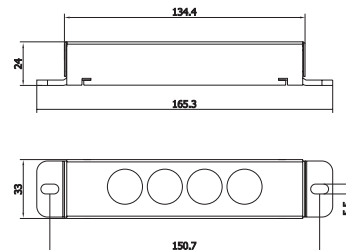
RGBWW, RGBCW, RGBA, R, G, B, CW, WW



ArcLink Optic 4

Max. input current:	350 mA
Maximum Power Consumption:	4.5 W
Compatible Power Supplies:	ArcPower 36, 72, 144, 360
Compatible Power Supplies for single colour variants:	ArcPower SmartWhite 36, 72, 144
Operating Ambient Temp. Range:	-20°C/+40°C
Operating Temperature:	+50°C @ ambient 25°C
Cooling System:	convection
Optical System:	6°, 15°, 25°, 25°x6°, 38°
LED Device:	1 Watt Luxeon
Warm White LEDs (WW):	3300 K
Cool White LEDs (CW):	6500 K
Typical Lumen Maintenance:	70% @ 50.000 hours
Led Life Expectancy:	minimum 50.000 hours
Construction:	aluminium base
Weight:	0.06 kg
Power/Data plug:	RJ45
Accessories:	patch cables, termination plug

RGBWW, RGBCW, RGBA, R, G, B, CW, WW







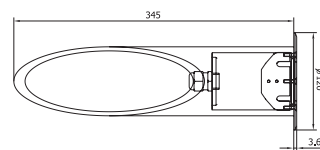
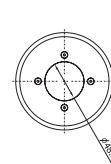
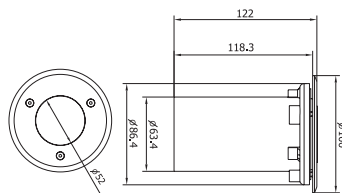
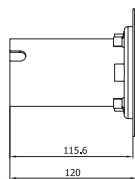
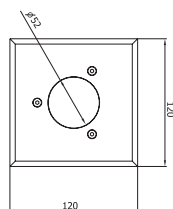
ArcSource Inground 3, 6, 7

The Anolis ArcSource Inground range brings the high standards of the ArcSource range to the world of exterior lighting. Industry standard Inground fittings with an IP rating of 67 combined with drive over load bearings allows the dramatic effects of ArcSource to be introduced to landscape illumination.



TECHNICAL SPECIFICATIONS:

	ArcSource Inground 3	ArcSource Inground 6	ArcSource Inground 7
Max. input current:	350 mA	350 mA	350 mA
Maximum Power Consumption:	4.2 Watts	8.4 Watts	9.6 Watts
Compatible Power Supplies:	ArcPower 36,72, 144, 360, 16x6	ArcPower 36, 72, 144, 360, 16x6	ArcPower 36, 72, 144, 360, 16x6
Compatible Power Supplies for single colour variants:	ArcPower SW 36, 72, 144	ArcPower SW 36, 72, 144	ArcPower SW 36, 72, 144
Operating Ambient Temp. Range:	-20°C/+30°C	-20°C/+30°C	-20°C/+30°C
Cooling System:	convection	convection	convection
Optical Systems Available:	6°, 15°, 25°, 38°	6°, 25°	6°, 25°
LED Device:	1 Watt Luxeon	1 Watt Luxeon	1 Watt Luxeon
Warm White LEDs (WW):	3300 K	3300 K	3300 K
Cool White LEDs (CW):	6500 K	6500 K	6500 K
Typical Lumen Maintenance:	70% @ 50.000 hours	70% @ 50.000 hours	70% @ 50.000 hours
Led Life Expectancy:	minimum 50.000 hours	minimum 50.000 hours	minimum 50.000 hours
Construction: top flange:	stainless steel	stainless steel	stainless steel
housing:	hardened aluminium	hardened aluminium	hardened aluminium
mounting sleeve:	plastic	plastic	plastic
transparent cover:	tempered glass	tempered glass	tempered glass
Top flange shapes:	round, square	round	round
Weight:	0.5 kg	1.2 kg	1.2 kg
Ingress Protection:	IP 67	IP 67	IP 67
Power/Data plug:	RJ45	RJ45	RJ45
Power/Data cable:	Belden 7934A, cat. 5e; 1.5 m	Belden 7934A, cat. 5e; 1.5 m	Belden 7934A, cat. 5e; 1.5 m
LED Colour Variants:	RGB, R, G, B, A, CW, WW	RGB, RGBCW, RGBWW, R, G, B, A, CW, WW	RGBCW, RGBWW, R, G, B, A, CW, WW







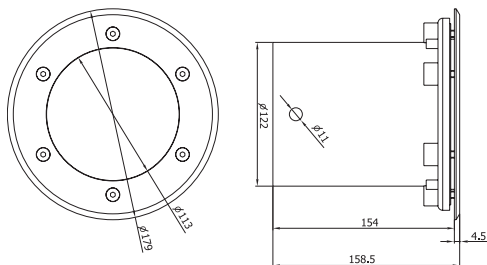
ArcSource Inground 12

ArcSource 12 Inground brings the option of an AR1-11 size LED fitting to the world of exterior lighting. IP67 rated and with drive over load bearings ArcSource 12 Inground is capable of meeting the most demanding of exterior applications. Building and feature illumination becomes a real possibility with Anolis ArcSource 12 Inground.

TECHNICAL SPECIFICATIONS:

ArcSource Inground 12

Max. input current:	350 mA
Maximum Power Consumption:	13.6 Watts
Compatible Power Supplies:	ArcPower 36, 72, 144, 360
Compatible Power Supplies for single colour variants:	ArcPower SmartWhite 36, 72, 144
Operating Ambient Temp.Range:	-20°C/+30°C
Cooling System:	convection
Optical Systems Available:	6°, 15°, 25°, 38°
LED Device:	1 Watt Luxeon
Warm White LEDs (WW):	3300 K
Cool White LEDs (CW):	6500 K
Typical Lumen Maintenance:	70% @ 50.000 hours
Led Life Expectancy:	minimum 50.000 hours
Construction:	housing: hardened aluminium
	mounting sleeve: plastic
	transparent cover: tempered glass
Top flange shape:	round
Weight:	2 kg
Ingress Protection:	IP 67
Power/Data plug:	RJ45
Power/Data cable:	Belden 7934A, cat. 5e; 1.5 meters long
LED Colour Variants:	RGB, RGBWW, RGBCW, R, G, B, A, CW, WW, SW







ArcSource 1

The Anolis ArcSource 1 is a single colour high powered LED fixture utilising the latest Luxeon high output LED's. Available in 4 optical formats, beam, asymmetric beam x 2 or marker the ArcSource 1 has integrated electronic control allowing the fixture to operate on a range of AC/DC input voltages; the onboard electronic control also ensures that constant output intensity is maintained through all fixtures no matter where they are located in relation to the power supply.

Finished in 316 stainless steel with an IP rating of 68 and drive over load bearings, the ArcSource 1 offers completely flexible solutions to both interior and exterior environments.



TECHNICAL SPECIFICATIONS:

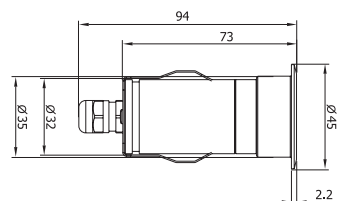
ArcSource 1

Input Voltage:	9-35V DC or 6-24 V AC
Maximum Power Consumption:	1.6 Watts
Operating Ambient Temp. Range:	-20°C/+40°C
Cooling System:	convection
Optical Systems Available:	10°, super wide-angle beam, asymmetric beam
LED Device:	1 Watt Luxeon
Warm White LED (WW):	3300 K
Cool White LED (CW):	6500 K
Typical Lumen Maintenance:	70% @ 50.000 hours
Led Life Expectancy:	minimum 50.000 hours
Construction:	stainless steel top flange, brass housing
Glass covers:	flat tempered glass (clear), domed tempered glass (frosted)
Weight:	0.3 kg
Ingress Protection:	IP 68
Power cable:	Ölflex Robust Z10; 2x0.5 mm²; 1 meter long

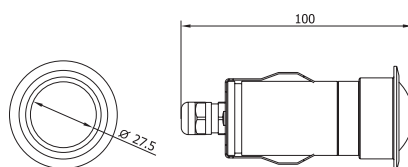
LED Colour Variants:

R, G, B, A, CW, WW

ArcSource 1



ArcSource 1 Super wide-angle







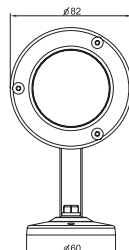
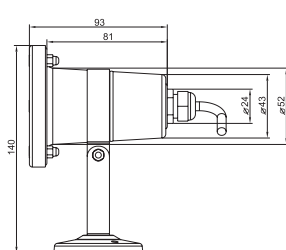
ArcSource Outdoor 3, 6, 7

Manufactured from 316 stainless steel and with an IP rating of 68 the ArcSource Outdoor 3, 6, 7 make the perfect companion for the ArcSource Inground and ArcLine Outdoor products. The ArcSource Outdoor 3, 6, 7's high IP Rating allows the units to operate completely submerged in water, making illumination of water features a possibility. Power and Control for the ArcSource Outdoor range comes from the ArcPower 36, 72, 144, 360.



TECHNICAL SPECIFICATIONS:

	ArcSource Outdoor 3	ArcSource Outdoor 6	ArcSource Outdoor 7
Max. input current:	350 mA	350 mA	350 mA
Maximum Power Consumption:	4.2 Watts	8.4 Watts	9.6 Watts
Compatible Power Supplies:	ArcPower 36, 72, 144, 360, 16x6	ArcPower 36, 72, 144, 360, 16x6	ArcPower 36, 72, 144, 360, 16x6
Compatible Power Supplies for single colour variants:	ArcPower SW 36, 72, 144	ArcPower SW 36, 72, 144	ArcPower SW 36, 72, 144
Operating Ambient Temp. Range:	-20°C/+30°C	-20°C/+30°C	-20°C/+30°C
Cooling System:	convection	convection	convection
Optical Systems Available:	6°, 15°, 25°, 38°	6°, 25°	6°, 25°
LED Device:	1 Watt Luxeon	1 Watt Luxeon	1 Watt Luxeon
Warm White LEDs (WW):	3300 K	3300 K	3300 K
Cool White LEDs (CW):	6500 K	6500 K	6500 K
Typical Lumen Maintenance:	70% @ 50.000 hours	70% @ 50.000 hours	70% @ 50.000 hours
Led Life Expectancy:	minimum 50.000 hours	minimum 50.000 hours	minimum 50.000 hours
Construction: top flange:	stainless steel	stainless steel	stainless steel
housing:	stainless steel	stainless steel	stainless steel
"U" bracket & screws:	stainless steel	stainless steel	stainless steel
transparent cover:	tempered glass	tempered glass	tempered glass
Top flange shapes:	round	round	round
Weight:	0.5 kg	0.6 kg	0.6 kg
Ingress Protection:	IP 68	IP 68	IP 68
Power/Data plug:	RJ45	RJ45	RJ45
Power/Data cable:	Belden 7930A, Cat. 5e; 1.5 m	Belden 7930A, Cat. 5e; 1.5 m	Belden 7930A, Cat. 5e; 1.5 m
LED Colour Variants:	RGB, R, G, B, A, CW, WW	RGBCW, RGBWW, RGB, R, G, B, A, CW, WW	RGBCW, RGBWW, R, G, B, A, CW, WW







ArcSource Outdoor 12, 36

When more output is required for outdoor applications the ArcSource Outdoor 12, 36 can be introduced. Once again manufactured from 316 stainless steel and with an IP rating of 68 the ArcSource Outdoor 12, 36 is at home either in or out of the water making it available to meet the requirements of the widest range of exterior lighting projects.

Once again power and control is provided by ArcPower 36, 72, 144, 360.



TECHNICAL SPECIFICATIONS:

ArcSource Outdoor 12

Max. input current:	350 mA
Maximum Power Consumption:	13.6 Watts
Compatible Power Supplies:	ArcPower 36, 72, 144, 360
Compatible Power Supplies for single colour variants:	ArcPower SmartWhite 36, 72, 144
Operating Ambient Temp. Range:	-20°C/+30°C
Cooling System:	convection
Optical Systems Available:	6°, 15°, 25°, 38°
LED Device:	1 Watt Luxeon
Warm White LEDs (WW):	3300 K
Cool White LEDs (CW):	6500 K
Typical Lumen Maintenance:	70% @ 50.000 hours
Led Life Expectancy:	minimum 50.000 hours
Construction: top flange	stainless steel
housing	stainless steel
"U" bracket & screws:	stainless steel
transparent cover:	tempered glass
Weight:	1.7 kg
Ingress Protection:	IP 68
Power/Data plug:	RJ45
Power/Data cable:	Belden 7930A, Cat. 5e; 1.5 m

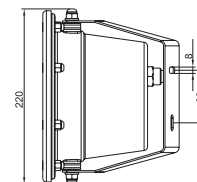
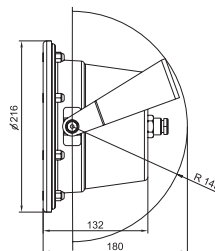
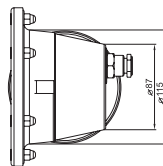
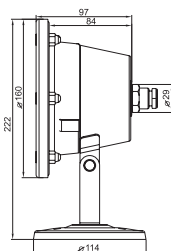
ArcSource Outdoor 36

Max. input current:	350 mA
Maximum Power Consumption:	40.8 Watts
Compatible Power Supplies:	ArcPower 36, 72, 144, 360
Compatible Power Supplies for single colour variants:	ArcPower SmartWhite 36, 72, 144
Operating Ambient Temp. Range:	-20°C/+30°C
Cooling System:	convection
Optical Systems Available:	6°, 15°, 25°, 38°
LED Device:	1 Watt Luxeon
Warm White LEDs (WW):	3300 K
Cool White LEDs (CW):	6500 K
Typical Lumen Maintenance:	70% @ 50.000 hours
Led Life Expectancy:	minimum 50.000 hours
Construction: top flange	stainless steel
housing	stainless steel
"U" bracket & screws:	stainless steel
transparent cover:	tempered glass
Weight:	3.3 kg
Ingress Protection:	IP 68
Power/Data plug:	RJ45
Power/Data cable:	Belden 7930A, Cat. 5e; 1.5 m

LED Colour Variants:

RGB, RGBWW, RGBCW, R, G, B, A, CW, WW, SW

RGB, RGBWW, RGBCW, R, G, B, A, CW, WW, SW



ArcSource Wall 3, Twin Wall 3





ArcSource Wall 3, Twin Wall 3

Finished in 316 stainless steel and with an IP rating of 54, the ArcSource Wall 3 RGB brings full colour mixing to a compact wall mounted fitting, using high powered Luxeon LED's the unit can be used to up light or down light from a wall mounted position making the unit ideal when recessed fittings are not possible.

As well as colour mixing from the RGB source the Anolis ArcSource Wall 3 can also be fitted with either warm white 3300 K or cold white 6500 K high powered Luxeon LED's making it the ideal alternative to conventional low voltage halogen wall lights.



TECHNICAL SPECIFICATIONS:

Max. input current:
Maximum Power Consumption:
Compatible Power Supplies:
Compatible Power Supplies
for single colour variants:
Operating Ambient Temp. Range:
Cooling System:
Optical Systems Available:
LED Device:
Warm White LEDs (WW):
Cool White LEDs (CW):
Typical Lumen Maintenance:
Led Life Expectancy:
Construction: top flange:
housing:
transparent cover:

ArcSource Wall 3

350 mA
4.2 Watts
ArcPower 36, 72, 144, 360, 16x6
ArcPower SmartWhite 36, 72, 144
-20°C/+30°C
convection
6°, 15°, 25°, 38°
1 Watt Luxeon
3300 K
6500 K
70% @ 50.000 hours
minimum 50.000 hours
stainless steel
stainless steel
tempered glass
0.7 kg
IP 54
RJ45
Belden 7930A, Cat. 5e; 1.5 m

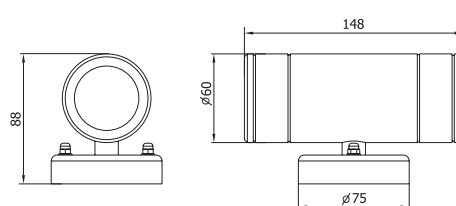
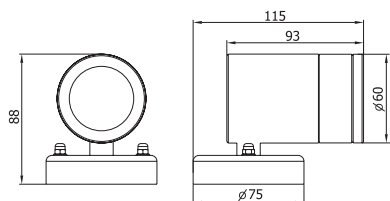
LED Colour Variants:

RGB, R, G, B, A, CW, WW

ArcSource Twin Wall 3

350 mA
8.4 Watts
ArcPower 36, 72, 144, 360, 16x6
ArcPower SmartWhite 36, 72, 144
-20°C/+30°C
convection
6°, 15°, 25°, 38°
1 Watt Luxeon
3300 K
6500 K
70% @ 50.000 hours
minimum 50.000 hours
stainless steel
stainless steel
tempered glass
1.2 kg
IP 54
RJ45
Belden 7930A, Cat. 5e; 1.5 m

RGB, R, G, B, A, CW, WW



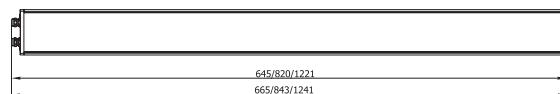
CASINO



Available in either single or double configurations and using the latest Luxeon high powered LED's the ArcLine Outdoor is the perfect solution for both Landscape and building illumination, with an IP rating of 65 the ArcLine Outdoor will suitable for the most demanding of exterior installations. Power and control is provided by the ArcPower 36, 72, 144, 360.



	ArcLine Outdoor Optic 18 ArcLine Double Outdoor Optic 36	ArcLine Outdoor Optic 24 ArcLine Double Outdoor Optic 48	ArcLine Outdoor Optic 36 ArcLine Double Outdoor Optic 72
Max. input current per colour:	350 mA	350 mA	350 mA
Total Power Consumption:	20.4 Watts 40.8 Watts	27.2 Watts 54.4 Watts (27.2 W per line)	40.8 Watts 81.6 Watts (40.8 W per line)
Total Number of LEDs:	18 2x18	24 2x24	36 2x36
Compatible Power Supplies:	ArcPower 36, 72, 144, 360 ArcPower 36, 72, 144, 360	ArcPower 36, 72, 144, 360 ArcPower 36, 72, 144, 360	ArcPower 36, 72, 144, 360 ArcPower 36, 72, 144, 360
Compatible Power Supplies for smart white and single colour variants:	ArcPower SmartWhite 36, 72, 144	ArcPower SmartWhite 36, 72, 144	ArcPower SmartWhite 36, 72, 144
Operating Ambient Temp. Range:	-20°C/+40°C	-20°C/+40°C	-20°C/+40°C
Cooling System:	convection	convection	convection
Optical Systems Available:	6°, 15°, 25°, 25°x6°, 38°	6°, 15°, 25°, 25°x6°, 38°	6°, 15°, 25°, 25°x6°, 38°
LED Device:	1 Watt Luxeon	1 Watt Luxeon	1 Watt Luxeon
Typical Lumen Maintenance:	70% @ 50.000 hours	70% @ 50.000 hours	70% @ 50.000 hours
Led Life Expectancy:	minimum 50.000 hours	minimum 50.000 hours	minimum 50.000 hours
Construction: body:	precision extruded alluminium	precision extruded alluminium	precision extruded alluminium
“U” holder:	zincing steel	zincing steel	zincing steel
transparent cover:	tempered glass	tempered glass	tempered glass
Weight:	3.1 kg 4.6 kg	4.3 kg 5.8 kg	6.4 kg 8.5 kg
Ingress Protection:	IP 65	IP 65	IP 65
Power/Data plug:	RJ45	RJ45	RJ45
Power/Data cable:	Belden 7930A, Cat. 5e; 1.5 m	Belden 7930A, Cat. 5e; 1.5 m	Belden 7930A, Cat. 5e; 1.5 m
LED Colour Variants:	RGB, R, G, B, A, CW, WW	RGB, R, G, B, A, CW, WW, SW	RGB, R, G, B, A, CW, WW, SW
Other dimensional and colour variants on request.			



ArcLine Outdoor Optic 18, 24, 36/K2, ArcLine Double Outdoor Optic 36, 48, 72/K2





ArcLine Outdoor Optic 18, 24, 36/K2, ArcLine Double Outdoor Optic 36, 48, 72/K2

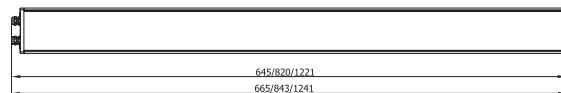
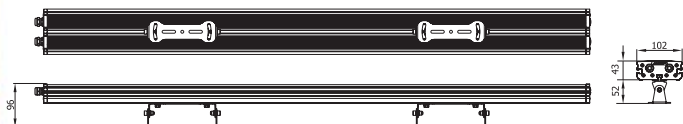
When exterior products require extremely high light levels Luxeon K2 LED's can be added to the ArcLine Outdoor Optic, the latest edition to the Luxeon high power LED family brings unsurpassed performance to the ArcLine Outdoor Range.

With a variety of drive options available depending on the light output required the ArcLine Outdoor Optic can be applied to the most demanding of exterior applications.



TECHNICAL SPECIFICATIONS:

	ArcLine Outdoor Optic 18/K2 <i>ArcLine Double Outdoor Optic 36/K2</i>	ArcLine Outdoor Optic 24/K2 <i>ArcLine Double Outdoor Optic 48/K2</i>	ArcLine Outdoor Optic 36/K2 <i>ArcLine Double Outdoor Optic 72/K2</i>
Max. input current per colour:	700 mA	700 mA	700 mA
Total Number of LEDs:	18 2x18	24 2x24	36 2x36
Compatible Power Supplies:	ArcPower 36/K2, 72/K2	ArcPower 36/K2, 72/K2	ArcPower 36/K2, 72/K2
Compatible Power Supplies for SmartWhite and single colours:	ArcPower SmartWhite 36/K2, 72/K2	ArcPower SmartWhite 36/K2, 72/K2	ArcPower SmartWhite 36/K2, 72/K2
Operating Ambient Temp. Range:	-20°C/+40°C	-20°C/+40°C	-20°C/+40°C
Cooling System:	convection	convection	convection
Optical Systems Available:	6°, 15°, 25°, 25°x6°, 38°	6°, 15°, 25°, 25°x6°, 38°	6°, 15°, 25°, 25°x6°, 38°
LED Device:	Luxeon K2	Luxeon K2	Luxeon K2
Typical Lumen Maintenance:	70% @ 60.000 hours	70% @ 60.000 hours	70% @ 60.000 hours
Led Life Expectancy:	minimum 60.000 hours	minimum 60.000 hours	minimum 60.000 hours
Construction: body:	precision extruded alluminium	precision extruded alluminium	precision extruded alluminium
"U" holder:	zincing steel	zincing steel	zincing steel
transparent cover:	tempered glass	tempered glass	tempered glass
Weight:	3.1 kg 4.6 kg	4.3 kg 5.8 kg	6.4 kg 8.5 kg
Ingress Protection:	IP 65	IP 65	IP 65
Power/Data plug:	RJ45	RJ45	RJ45
Power/Data cable:	Belden 7930A, Cat. 5e; 1.5 m	Belden 7930A, Cat. 5e; 1.5 m	Belden 7930A, Cat. 5e; 1.5 m
LED Colour Variants:	RGB, R, G, B, A, CW, WW	RGB, R, G, B, A, CW, WW, SW	RGB, R, G, B, A, CW, WW, SW







ArcControl 1024

Anolis ArcControl 1024 is a feature-rich, fully programmable DMX controller, designed to offer comprehensive and intuitive control of all Anolis fittings as well as third party DMX controlled luminaires. It is ideal for the widest possible range of applications including commercial and residential installations - restaurants, bars, hotels, modern interiors, lightscapes, retail outlets, point-of-sales, illuminated signs and exhibition stands. Anolis ArcControl 1024 is a totally stand-alone system and is wall-mounted it requires no additional equipment to control DMX fittings, and fits neatly into a 47 mm deep back box, surface mount and frame mount options are also available. Anolis ArcControl 1024 includes a comprehensive library of all Anolis luminaires and other effects for easy installation and programming. The LCD display and scroll-wheel combined with the real time astronomical clock allows for more complex sequences, timed events and colours to be added without requiring the use of a computer.



TECHNICAL SPECIFICATIONS:

ArcControl 1024

DMX Channels:	2 complete universes of 512 channels each
DMX Standard:	DMX 1990 A
DMX refresh rate:	Configurable, 36 Hz Max
Power Supply:	15 V DC, 300 mA, (included)
Networking:	Ethernet 10/100 MHz - Auto uplink detection Built-in web server Telnet command server
Analogue channels:	3 independent 0-10 V outputs, 50 mA
Contact inputs:	3 volt-free contact inputs
Audio Input:	Line-level mono audio input for beat triggering
Real-time clock:	Built-in real-time clock, with 6-month battery back-up
LCD Screen:	128x64 pixel, monochrome with configurable RGB backlight
Physical Size:	35 mm deep, Fits standard 47 mm-deep UK double-gang backbox
Weight:	255 grammes, without fascia
Standard Fascia:	Stainless Steel





ArcPower 9, 12

Anolis ArcPower 9, 12 provide the perfect complement to the existing ArcPower range, specifically designed for installation where no DMX control or dimming is required the Anolis ArcSource 9, 12 provides both a simple and economical power solution for a variety of the high quality Anolis ArcSource range. Installations of single colour ArcSource products now have the ideal power solution. Manufactured from the highest quality materials to the same high standards as the rest of the Anolis range ArcPower range, the ArcPower 9, 12 brings a new dimension to single colour installations.



TECHNICAL SPECIFICATIONS:

ArcPower 9

Input Voltage:	110-240 V AC, 50/60 Hz
Designed for:	Single colour variants of ArcLink/Optic 3, 4; ArcSource 3, 6, 7; ArcSource Outdoor 3, 6, 7; ArcSource Wall/TwinWall 3; ArcSource Inground 3, 6, 7; ArcLine Outdoor Optic 6; ArcPar 3; ArcLine Optic 3, 6; ArcSource 3/K2
Max. load:	9 x 1.2 W LEDs (e.g. 3 x ArcSource 3 or 1 x ArcSource 6 + 1 x ArcSource 3) 4 x 3 W LEDs (e.g. 1 x ArcSource 3/K2)
Protections:	Thermal, short circuit, over voltage and open circuit
Power connection:	Screw terminals
LED output connection:	Screw terminals
Max. housing temperature:	<85°C
Ambient operating Temperature range:	-20°C/ +45°C
Colour:	Grey
Dimensions:	99 x 39 x 23.5 mm
Weight:	70 g

ArcPower 12

Input Voltage:	230/240 V AC, 50/60 Hz
Designed for:	Single colour variants of the ArcSource 12 only
Max. load:	1 x ArcSource 12
Protections:	Thermal, short circuit, over voltage and open circuit
Power connection:	Screw terminals
LED output connection:	Screw terminals
Max. housing temperature:	<85°C
Ambient operating Temperature range:	-20°C/ +40°C
Colour:	Grey
Dimensions:	111 x 52 x 24 mm
Weight:	105 g





ArcPower 36, 72

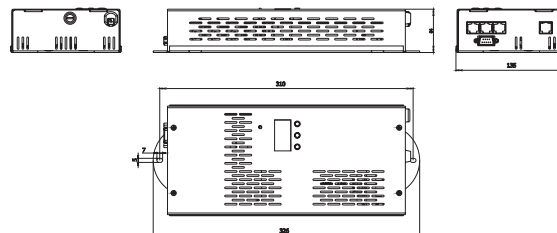
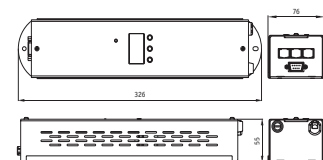
The Anolis range of LED lighting fixtures is brought to life with power and control via the ArcPower range. Manufactured from only the highest quality components the ArcPower range produce the both the performance and reliability required for modern lighting solutions. Using industry standard protocols such as DMX 512 and RS232 along with globally recognised RJ45 connectors the ArcPower range is the lighting designer's perfect solution.



TECHNICAL SPECIFICATIONS:

	ArcPower 36
Input Voltage:	100-240 V AC, 50/60 Hz
Max.Power Consumption:	60 VA
Number of LED output zones:	1
Max. Output current:	350 mA per colour
Max. load per zone:	36 x 1 W LED's in RGB mode 42 x 1 W LED's in RGBW mode
Total load:	36 LED's in RGB mode 42 LED's in RGBW mode
Control:	USITT DMX 512, DyNet, RS232
DMX channels:	3, 4, 6, 7
DMX protocol modes:	5
Operation modes:	DMX, Mast./slave, Stand-alone
Built-in programs:	10
User editable programs:	3 (up to 50 steps each)
Display:	3 digit LED
DMX connection:	RJ45
RS232 connection:	DE-9 (male)
LED output connection:	RJ45
Operating temperature range:	-10°C/+40°C
Weight:	1.1 kg

	ArcPower 72
Input Voltage:	100-240 V AC, 50/60 Hz
Max.Power Consumption:	120 VA
Number of LED output zones:	2
Max. Output current:	350 mA per colour
Max. load per zone:	36 x 1 W LED's in RGB mode 42 x 1 W LED's in RGBW mode
Total load:	72 LED's in RGB mode 84 LED's in RGBW mode
Control:	USITT DMX 512, DyNet, RS232
DMX channels:	4, 6, 8, 11
DMX protocol modes:	4
Operation modes:	DMX, Mast./slave, Stand-alone
Built-in programs:	6
User editable programs:	3 (up to 30 steps each)
Display:	3 digit LED
DMX connection:	RJ45
RS232 connection:	DE-9 (male)
LED output connection:	RJ45
Operating temperature range:	-10°C/+40°C
Weight:	1.8 kg







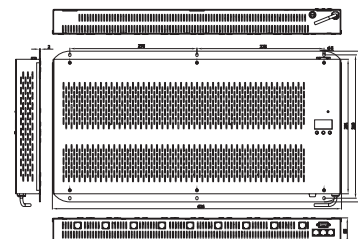
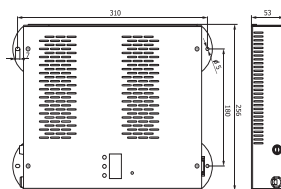
ArcPower 144, 360

For larger projects the Anolis ArcPower 144 and 360 keep the installation process as simple as possible and meets the demands of the largest and most complex system. Compatibility is achieved via DMX 512 or RS232 inputs and utilizing industry standard Cat 5 cables ensures a smooth installation process, impressive built in pre programs and on board programming complete this truly impressive package.



TECHNICAL SPECIFICATIONS:

	ArcPower 144	ArcPower 360
Input Voltage:	100-240 V AC, 50/60 Hz	100-240 V AC, 50/60 Hz
Max.Power Consumption:	240 VA	600 VA
Number of LED output zones:	4	10
Max. Output current:	350 mA per colour	350 mA per colour
Max. load per zone:	36 x 1 W LED's in RGB mode, 42 x 1 W LED's in RGBW mode	36 LEDs in RGB mode, 42 LEDs in RGBW mode
Total load:	144 LED's in RGB mode, 168 LED's in RGBW mode	360 LED's in RGB mode, 420 LED's in RGBW mode
Control:	USITT DMX 512, DyNet, RS232	USITT DMX 512, DyNet, RS232
DMX channels:	4, 12, 16, 19	4, 5, 30, 40, 43
DMX protocol modes:	4	5
Operation modes:	DMX, Mast./slave, Stand-alone	DMX, Mast./slave, Stand-alone
Built-in programs:	6	6
User editable programs:	3 (up to 30 steps each)	3 (up to 30 steps each)
Display:	3 digit LED	3 digit LED
DMX connection:	RJ45	RJ45
RS232 connection:	DE-9 (male)	DE-9 (male)
LED output connection:	RJ45	RJ45
Operating temperature range:	-10°C/+40°C	-10°C/+40°C
Weight:	2.9 kg	6.3 kg



ArcPower 384 Rack-Mount





ArcPower 384 Rack-Mount

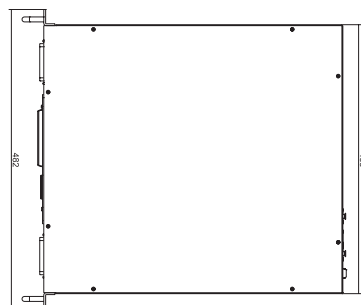
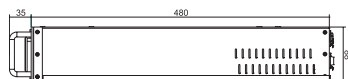
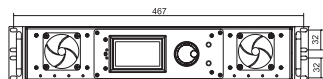
With many of today's LED's installations becoming more and more technically demanding the ArcPower 384 Rack Mount sets new standards in LED driver technology. Offering 8 individually controllable outputs, ArcPower 384 Rack Mount is compatible with DMX, RDM (remote device management), Art Net and DyNet allow the widest range of flexibility with advanced LED installations. High quality components and Anolis custom software ensures the highest level of reliability that has become a standard with the rest of the Anolis Arcpower range. A graphic display panel combined with the ANS (Anolis Navigation System) makes accessing the functions of the ArcPower 384 rack Mount a simple and intuitive experience. Demanding installation such as, Shopping Malls, Entertainment Complexes, Stadiums, Museums, Theme Parks and Virtually all high specifications LED installations can benefit from the huge flexibility of the Anolis Arcpower 384.



TECHNICAL SPECIFICATIONS:

ArcPower 384 Rack-Mount

Power supply:	Electronic auto-ranging
Input Voltage:	100-250 V AC, 50/60 Hz
Max.Power Consumption:	650 W
Number of LED output zones:	8
Max. Output current:	350 or 700 mA per colour
Max. load per zone:	36 LED's in RGB mode, 48 LED's in RGBW mode
Total load:	288 LED's in RGB mode, 384 LED's in RGBW mode
Control:	USITT DMX 512 (RDM support), Art-Net (ready for ACN), DyNet, RS232
DMX channels:	3, 5, 24, 32, 36
DMX protocol modes:	5
Operation modes:	DMX, Stand-alone
User editable programs:	3 (up to 30 steps each)
Display:	Blue/white LCD graphic
Setting & Addressing:	Anolis Navigation System (ANS)
Connections:	DMX IN/OUT: Locking 3-pin and 5-pin XLR
	Dynet: RJ45
	ArtNet: RJ45
	RS232: DE-9 (male)
	AC power input: Neutrik PowerCon, A-type, NAC3MPA
Maximum ambient operating temperature:	+40°C
Mounting:	19" Rack -Mount (2U)
Weight:	7.5 kg



ArcPower 36/K2, 72/K2





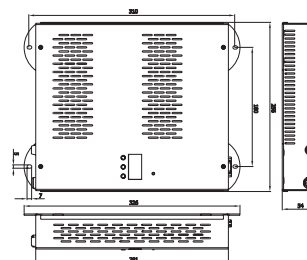
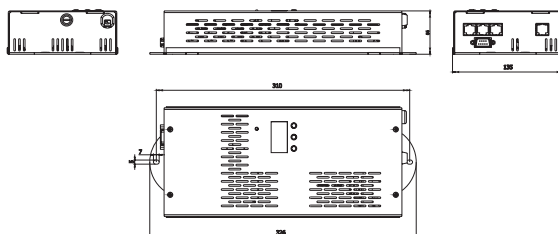
ArcPower 36/K2, 72/K2

When the high output Anolis K2 range needs power and control the ArcPower 36/K2 or ArcPower 72/K2 can be used to all effects. Utilising the industry standard CAT5 connectors and including built in pre programs as well as on board programming, DMX 512 and RS232 inputs the ArcPower 36/K2 and ArcPower 72/K2 can be integrated with ease into virtually any lighting control system.



TECHNICAL SPECIFICATIONS:

	ArcPower 36/K2	ArcPower 72/K2
Input Voltage:	100-240 V AC, 50/60 Hz	100-240 V AC, 50/60 Hz
Max.Power Consumption:	120 VA	240 VA
Number of LED output zones:	1	2
Max. Output current:	700 mA per colour	700 mA per colour
Max. load per zone:	36 x K2 or 3W LED's in RGB mode, 42 x K2 or 3W LED's in RGBW mode, 36 LED's in RGB mode, 42 LED's in RGBW mode	36 x K2 or 3W LED's in RGB mode, 42 x K2 or 3W LED's in RGBW mode, 72 LED's in RGB mode, 84 LED's in RGBW mode
Total load:	USITT DMX 512, DyNet, RS232	USITT DMX 512, DyNet, RS232
Control:		
DMX channels:	3, 4, 6, 7	4, 6, 8, 11
DMX protocol modes:	5	4
Operation modes:	DMX, Mast./slave, Stand-alone	DMX, Mast./slave, Stand-alone
Built-in programs:	10	6
User editable programs:	3 (up to 50 steps each)	3 (up to 50 steps each)
Display:	3 digit LED	3 digit LED
DMX connection:	RJ45	RJ45
RS232 connection:	DE-9 (male)	DE-9 (male)
LED output connection:	RJ45	RJ45
Operating temperature range:	-10°C/+40°C	-10°C/+40°C
Weight:	1.8 kg	2.9 kg



ArcPower 16x6





ArcPower 16x6

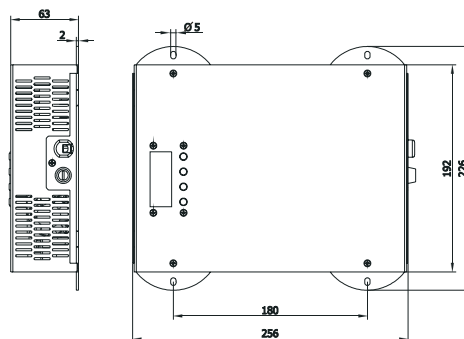
When individual fixture control is required the ArcPower 16 x 6 comes into it own. With 16 separately DMX addressable outputs the ArcPower 16 x 6 can be used to control complex patterns and matrixes. Each output is able to power up to 6 LED's making this the perfect control option for: ArcSource 3/6/Inground/Outdoor as well as ArcLink 3 RGB. With built in programs and user editable programs the ArcPower 16 x 6 can be linked to further units and operated in a master slave configuration. The ArcPower 16 x 6 can also be linked via DMX to the other ArcPower units in the range.



TECHNICAL SPECIFICATIONS:

ArcPower 16x6

Input Voltage:	100-240 V AC, 50/60 Hz
Max.Power Consumption:	170 VA
Number of LED output zones:	16
Max.Output current:	350 mA per colour
Max. load per zone:	6 LEDs in RGB mode, 8 LEDs in RGBW mode
Total load:	96 LED's
Control:	USITT DMX 512
DMX channels:	48, 50
DMX protocol modes:	2
Operation modes:	DMX, Stand-alone
Built-in programs:	5
User editable programs:	4 (up to 60 steps each)
Display:	4 digit LED
DMX connection:	RJ45
LED output connection:	RJ45
Operating temperature range:	-10°C/+40°C
Weight:	2 kg



ArcPower 36, 72, 144 SmartWhite





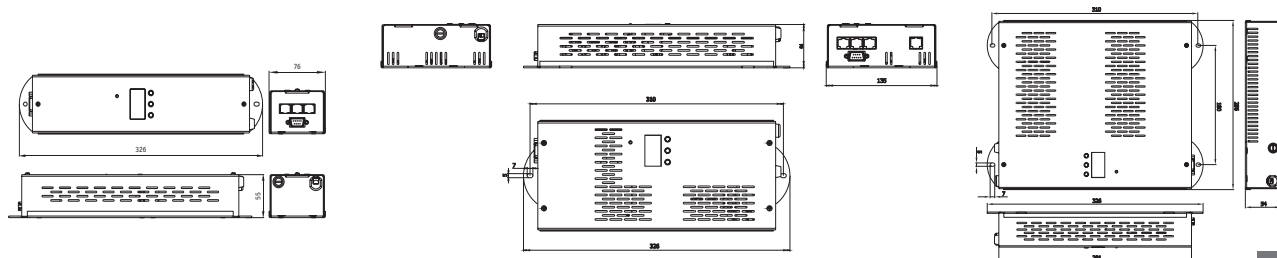
ArcPower 36, 72, 144 SmartWhite

The ArcPower 36, 72, 144 SmartWhite bring to life the Anolis Smart White range of LED lighting fixtures. Electronic dimming of the individual white channels allow smooth fading through range of colour temperatures available allowing for precise control of the colour rendering for the widest range of applications. Using industry standard protocols such as DMX 512 and RS232 along with globally recognised RJ45 connectors again the ArcPower SmartWhite range is the lighting designer's perfect solution for variable white light applications.



TECHNICAL SPECIFICATIONS:

	ArcPower 36 SmartWhite	ArcPower 72 SmartWhite	ArcPower 144 SmartWhite
Input Voltage:	100-240 V AC, 50/60 Hz	100-240 V AC, 50/60 Hz	100-240 V AC, 50/60 Hz
Max.Power Consumption:	60 VA	120 VA	240 VA
Number of LED output zones:	1	2	4
Max. Output current:	350 mA per internal channel	350 mA per internal channel	350 mA per internal channel
Max. load per zone:	36 x 1 W LED's	36 x 1 W LED's	36 x 1 W LED's
Total load:	36 LED's	72 LED's	144 LED's
Control:	USITT DMX 512, DyNet protocol, RS232	USITT DMX 512, DyNet protocol, RS232	USITT DMX 512, DyNet protocol, RS232
DMX channels:	1, 2, 3, 4	1, 3, 4, 6	1, 3, 5, 8, 10, 12
DMX protocol modes:	5	6	6
Operation modes:	DMX, Master/slave, Stand-alone	DMX, Master/slave, Stand-alone	DMX, Master/slave, Stand-alone
Built-in programs:	2	2	2
User editable programs:	1 (up to 50 steps each)	1 (up to 30 steps each)	1 (up to 30 steps each)
Display:	3 digit LED	3 digit LED	3 digit LED
DMX connection:	RJ45	RJ45	RJ45
RS232 connection:	DE-9 (male)	DE-9 (male)	DE-9 (male)
LED output connection:	RJ45	RJ45	RJ45
Operating temperature range:	-10°C/+40°C	-10°C/+40°C	-10°C/+40°C
Weight:	1.1 kg	1.8 kg	2.9 kg



ArcPower 36/ K2, 72/K2 SmartWhite





ArcPower 36/K2, 72/K2 SmartWhite

The ArcPower36/K2, 72/K2 SmartWhite represent ideal drivers for Anolis K2 LED modules. Specific property of the drivers - electronic dimming of the individual white channels - allows smooth fading through range of available colour temperatures allowing for precise control of the colour rendering for applications in the decorative and architectural lighting fields.

Utilizing the industry standard CAT5 connectors, user-friendly programmability, DMX 512/RS232 inputs as well as support of DyNet protocol both drivers can be easily integrated with any lighting systems.



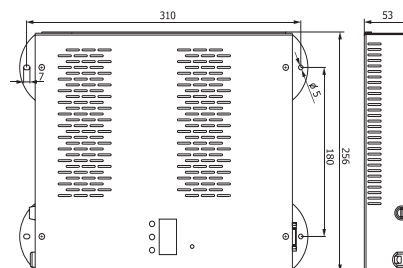
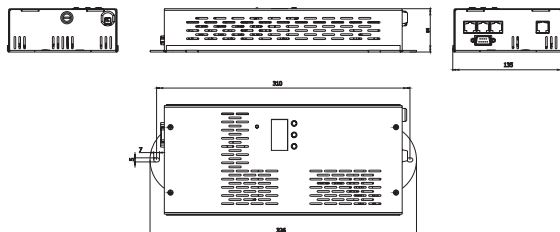
TECHNICAL SPECIFICATIONS:

ArcPower 36/K2 SmartWhite

Input Voltage:	100-240 V AC, 50/60 Hz
Max.Power Consumption:	120 VA
Number of LED output zones:	1
Max. Output current:	700 mA per internal channel
Max. load per zone:	36 x Luxeon K2 LED's
Total load:	36 LED's
Control:	USITT DMX 512, DyNet protocol, RS232
DMX channels:	1, 2, 4
DMX protocol modes:	5
Operation modes:	DMX, Master/slave, Stand-alone
Built-in programs:	2
User editable programs:	1 (up to 50 steps each)
Display:	3 digit LED
DMX connection:	RJ45
RS232 connection:	DE-9 (male)
LED output connection:	RJ45
Operating temperature range:	-10°C/+40°C
Weight:	1.8 kg

ArcPower 72/K2 SmartWhite

Input Voltage:	100-240 V AC, 50/60 Hz
Max.Power Consumption:	240 VA
Number of LED output zones:	2
Max. Output current:	700 mA per internal channel
Max. load per zone:	36 x Luxeon K2 LED's
Total load:	72 LED's
Control:	USITT DMX 512, DyNet protocol, RS232
DMX channels:	1, 3, 4, 6
DMX protocol modes:	6
Operation modes:	DMX, Master/slave, Stand-alone
Built-in programs:	2
User editable programs:	1 (up to 30 steps each)
Display:	3 digit LED
DMX connection:	RJ45
RS232 connection:	DE-9 (male)
LED output connection:	RJ45
Operating temperature range:	-10°C/+40°C
Weight:	2.9 kg







ArcSplitter 4, 2x12

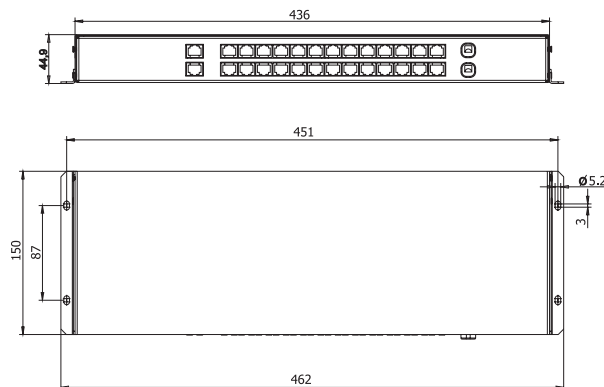
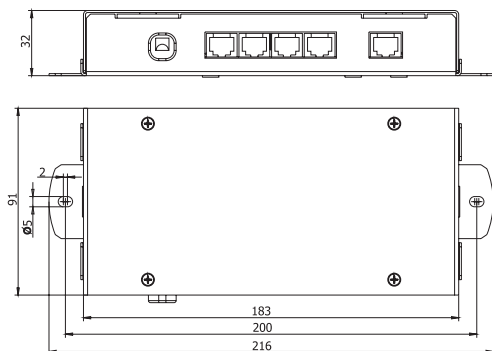
The ArcSplitter unit splits LED outputs of the ArcPower drivers into several branches. The ArcSplitter allows cabling of multiple LED modules more easily and faster. Small compact design and mounting holes in the unit's housing allow easy installation without extra PSU needed. All splitters are equipped with RJ45 sockets for data input/output. The ArcSplitter 4 splits one LED output of the ArcPower driver into 4 branches. The ArcSplitter 2x12 splits two LED outputs of the ArcPower driver into 12 branches each.

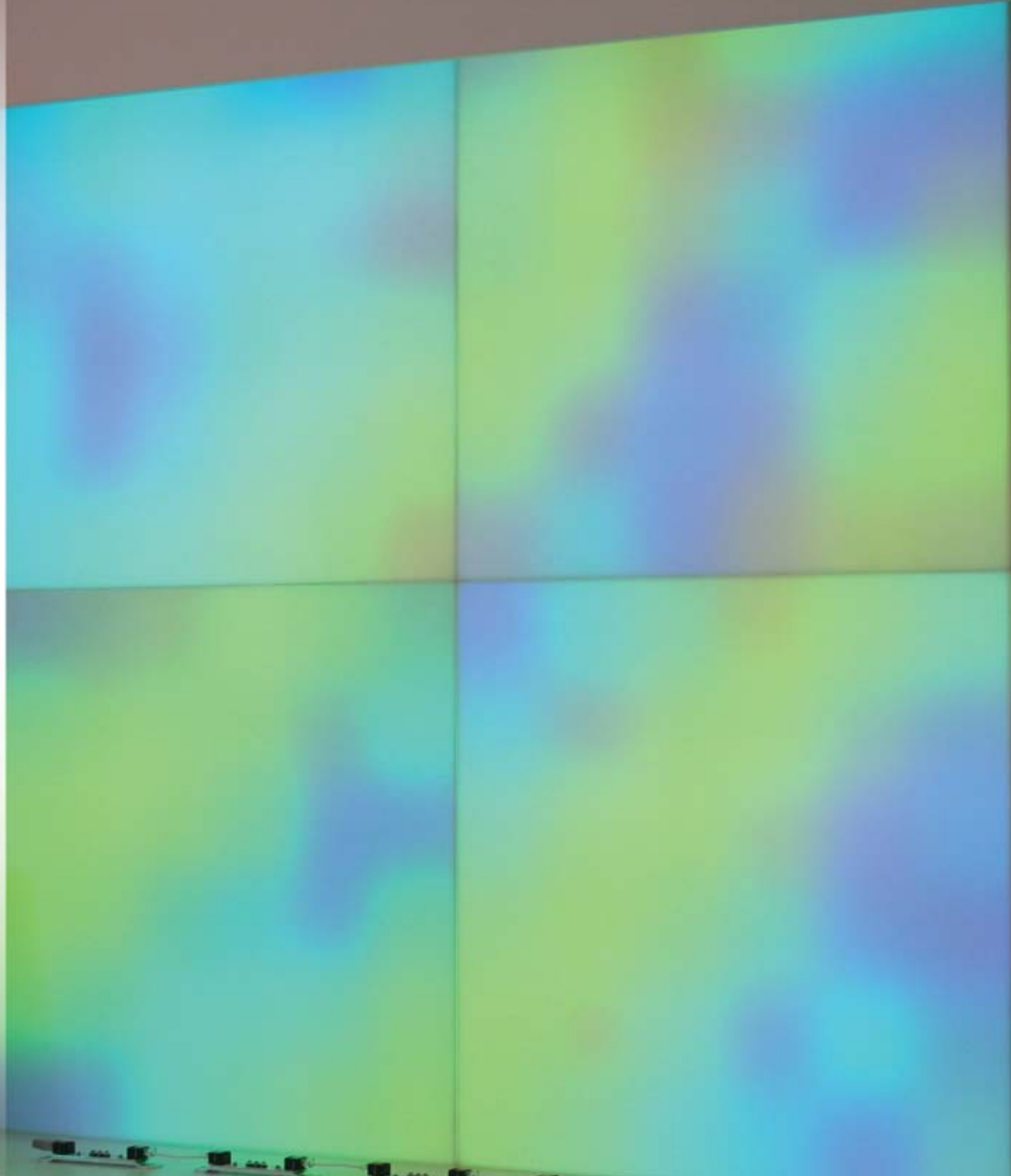


TECHNICAL SPECIFICATIONS:

	ArcSplitter 4	ArcSplitter 2x12
Number of LED outputs:	4	2x12
LED in/out:	RJ 45 sockets No extra PSU needed Sheet metal housing	RJ 45 sockets No extra PSU needed Sheet metal housing
Fixation:	2 mounting holes with diameter of 5 mm	4 mounting holes with diameter of 5 mm
Weight:	0.5 kg	1.9 kg

Standard and Rack mounting version available.







ArcQube 144

The ArcQube 144 is a DMX-controlled LED-panel for the architectural and „Architainment“ use. Designed for permanent installations, it comes in the standard size of 60 x 60 cm. The wallmount system is optimized for easy installing even on uneven walls. The ArcQube 144 contains a matrix of 12 by 12 RGB-LEDs. 4 LEDs are combined to one pixel, which gives the panel a pixel resolution of 6 by 6. The pixel pitch is 10 cm, the LED pitch is 5 cm. One panel uses up to 108 DMX channels, 4 panels occupy one DMX universe. Using a DMX-pixelmapper, abstract videographic content can be shown as well as nice color changes.

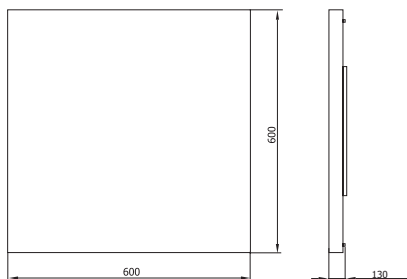
The ArcQube 144 comes in different characteristics: pixel, smooth or tiled. For special applications, various parameters of the ArcQube 144 can be programmed and stored in the panel: amount of DMX-channels (from 3 to 108), intensity characteristics, soft smoothing, Hold Last Frame. This is done via Software through the DMX-wire.

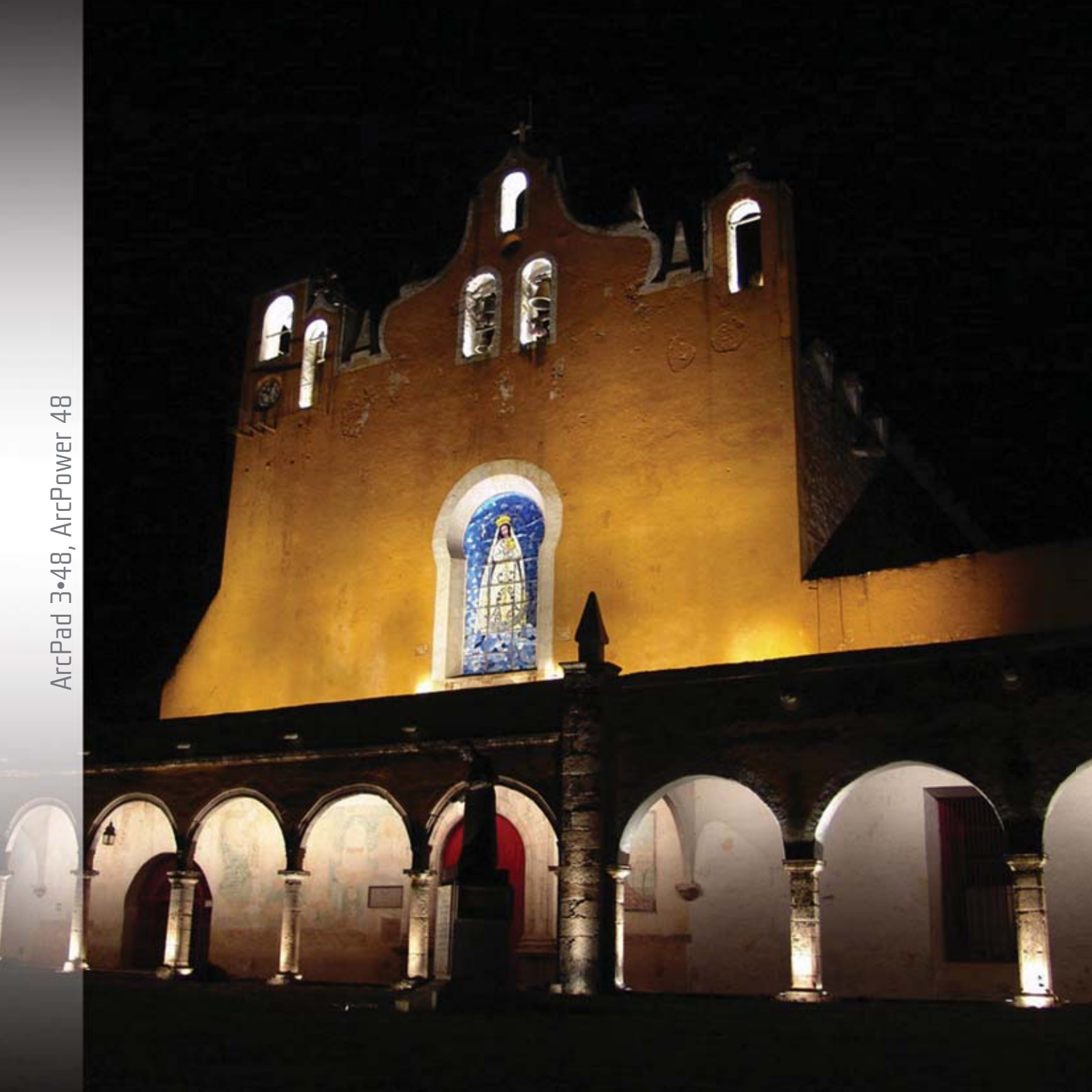


TECHNICAL SPECIFICATIONS:

ArcQube 144

Input Voltage:	110-240 V AC, 50/60 Hz
Maximum Power Consumption:	200 VA
Power supply:	Integrated
Light source:	12x12 RGB LEDs
LED pitch:	50 mm
Pixel pitch:	100 mm
Pixel resolution:	6x6
Beam angle:	170°
Optical system:	clear covering (PETG with a transmission rate of 90%)
Internal resolution:	3x11 Bit
Characteristics:	pixel, wash, tiled
Dimensions:	600 x 600 x 130 mm
Flammability:	B1
Optional Accessories:	wash or cassette diffuser (PETG with a transmission rate of 80%)







ArcPad 3•48, ArcPower 48

The ArcPad 3•48 is a durable and robust fixture with a projected lifespan of minimum 60.000 hours. The base of the fixture is made from a cast metal and it is built for floor or wall mounting via two holes in the base. The fixture's head is made up of a radiator (cast aluminium), on which the LED matrix and lenses are fitted. The head can be moved in relation to the base in ranges: pan +45°/-45°, tilt +60°/-90°. The fixture is controlled and driven by the ArcPower 48. The ArcPad 3•48 is designed for the generation of rich, saturated colours and colour changing effects in wall-washing, spot lighting, and large alcove lighting in many architectural applications.



TECHNICAL SPECIFICATIONS:

ArcPad 3•48

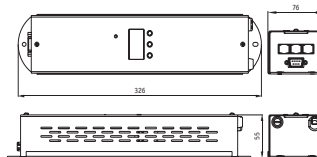
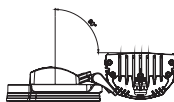
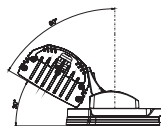
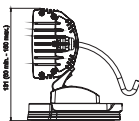
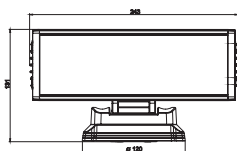
Maximum Power Consumption:	60 W
Compatible Power Supply:	ArcPower 48
Operating Ambient Temp.Range:	-20°C/+40°C
Cooling System:	convection
Led device:	Luxeon Rebel
Number of LEDs:	48
Available Optical Systems:	25°, 45°, 45°x15°
Typical Lumen Maintenance:	70% @ 60.000 hours
Led Life Expectancy:	minimum 60.000 hours
Operating Temperature:	+70°C @ ambient 25°C
Ingress Protection:	IP 67
Construction: Body:	cast aluminium
Base:	cast aluminium
Transparent cover:	tempered glass
"tilt" range:	+60°/-90°
"pan" range:	+45°/-45°
Power/Data Connection plug:	RJ45
Power/Data Connection cable:	Belden Cable 7930A Paired-Pata Tuff Cat. 5e, AWG 24

ArcPower 48

Input Voltage:	100-240 V AC, 50/60 Hz
Max.Power Consumption:	60 W
Max.Output current:	700 mA/white, green, blue; 420 mA/red
Max.load:	48 Luxeon Rebel LEDs
Control:	USITT DMX 512, RS232
DMX channels:	3, 4, 6, 7
DMX protocol modes:	5
Operation modes:	DMX, Mast./slave, Stand-alone
Built-in programs:	10
User editable programs:	3 (up to 50 steps each)
Display:	3 digit LED
DMX connection:	RJ45
RS232 connection:	9-pin D connector
Operating temperature range:	-10°C/+40°C
Weight:	1.1 kg

LED Colour Variants:

RGBCW, RGBWW, WW, CW, SW



ArcPad 3•48 Integral





ArcPad 3•48 Integral

The ArcPad 3•48 Integral is a compact version of the ArcPad 3•48. The base of the fixture includes an inbuilt Power Supply and an Intelligent LED driver. This format provides a solution that simplifies both the cabling and the installation of the ArcPad 3•48 Integral.

The ArcPad 3•48 Integral does not have any control panel or display, as all settings and addressing of the fixture are fully controlled via RDM (Remote Device Management) protocol.

Like the ArcPad 3•48, the fixture consists of 2 main component areas, the head is made up of a radiator (cast aluminium), onto which the LED matrix and lenses are located. The head can be moved in relation to the easy mount multi position base in the following ranges: pan +45°/-45°, tilt +60°/-90°.

The ArcPad 3•48 Integral has an IP rating of 65 and is therefore suitable for use in a wide variety range of both interior and exterior architectural applications.

The ArcPad 3•48 Integral is available in a various LED formats to allow dramatic effects to be created in even the most demanding of modern lighting schemes.



TECHNICAL SPECIFICATIONS:

Light source:	48 RGBW LEDs
LED device:	Luxeon Rebel
Available Optical Systems:	25°, 45°, 45°x15°
Typical Lumen Maintenance:	70% @ 60.000 hours
Led Life Expectancy:	minimum 60.000 hours
Power supply:	on-board
Input voltage:	100-240 V AC, 50/60 Hz, electronic auto-ranging
Maximum power consumption:	60 W
Control:	USITT DMX 512 (RDM support), DyNet
Setting & addressing:	via RDM protocol
DMX channels:	3, 4, 6, 7
DMX protocol modes:	5
White colour balance adjusting	
Housing:	cast aluminium
Transparent cover:	flat tempered glass
Ingress Protection:	IP 67
“tilt” range:	+60°/-90°
“pan” range:	+45°/-45°
Connection:	1.5 m of power/data cable
Cooling system:	convection
Ambient temperature range:	-20°C/+40°C

LED Colour Variants:

ArcPad 3•48 Integral

RGBCW, RGBWW, WW, CW, SW





ArcPAR 3, 12

Anolis ArcPar 3/12 brings the latest high technology LED light source to the universally accepted formats of MR16 and PAR 36, for retail or entertainment applications the ArcPar 3/12 are a complete ready to mount package. Finished in the highest quality powder coating and available in 3 colours Black, White or Silver the ArcPower 12 can add the latest technology in a conventional format to a wide variety of applications.

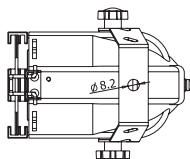
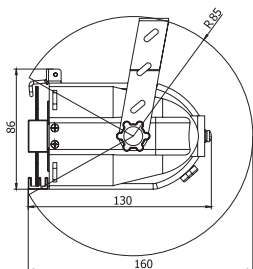
TECHNICAL SPECIFICATIONS:

ArcPAR 3

Max. input current:	350 mA
Maximum Power Consumption:	4.2 Watts
Compatible Power Supplies:	ArcPower 36, 72, 144, 360
Compatible Power Supplies for single colour variants:	ArcPower SmartWhite 36, 72, 144
Operating Ambient Temp. Range:	-20°C/+40°C
Operating Temperature:	+55°C @ ambient 25°C
Cooling System:	convection
Optical Systems Available:	6°, 15°, 25°, 38°
LED Device:	1 Watt Luxeon
Warm White LEDs (WW):	3300 K
Cool White LEDs (CW):	6500 K
Typical Lumen Maintenance:	70% @ 50.000 hours
Led Life Expectancy:	minimum 50.000 hours
Construction: housing:	precision extruded aluminium
“U” bracket:	steel
transparent cover:	tempered glass
finish:	black, white, silver
Weight:	0.5 kg
Ingress Protection:	IP 2X
Power/Data plug:	RJ45
Power/Data cable:	24 AWG x 4P; category 5e

LED Colour Variants:

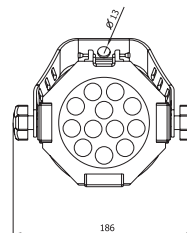
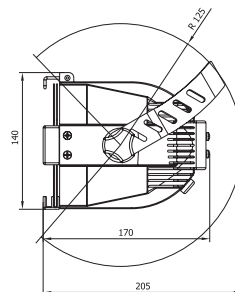
RGB, R, G, B, A, CW, WW



ArcPAR 12

350 mA
13.6 Watts
ArcPower 36, 72, 144, 360
ArcPower SmartWhite 36, 72, 144
-20°C/+40°C
+60°C @ ambient 25°C
convection
6°, 15°, 25°, 38°
1 Watt Luxeon
3300 K
6500 K
70% @ 50.000 hours
minimum 50.000 hours
precision extruded aluminium
aluminium plate
tempered glass
black, white, silver
1.5 kg
IP 2X
RJ45
24 AWG x 4P; category 5e

RGB, RGBWW, RGBCW, R, G, B, A, CW, WW







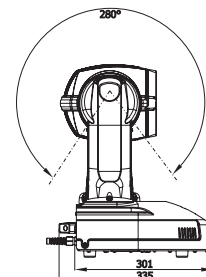
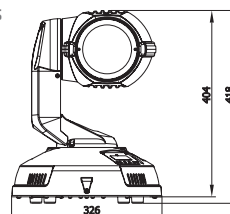
ArcWash 236

Combining a total of 36 high powered K2 Luxeon LED'S and a state of the art moving head luminere the ArcWash 236 brings the dimension of movement to LED wash lighting. Combining movement with full colour mixing allows for effect to be created that would be impossible from a fixed head fitting. With built in power supply, direct control via DMX, 530 degree pan movement and a tilt range of 280 degrees the ArcWash 236 is able to respond to the most demanding of installations. Combining all of the features of the ArcWash 236 with a standard ceiling grid mounting box allows for moving light LED Colour mixing technology to be installed into standard suspended ceilings grids.

TECHNICAL SPECIFICATIONS:

Input Voltage:	100-240 V AC, 50/60 Hz
Maximum Power Consumption:	180 VA
Light source:	36 x K2 Luxeon LED's (12 Red, 12 Green, 12 Blue)
Optical system:	6° standard, 25° optional beam angle 2 additional frost filters included
Colours:	pre-programmed colours and rainbow effect white balance pre-programmed via LED control panel
Dimmer/Strobe:	electronic dimming 0-100% strobe effect max. 25 fps
Pan:	530°
Tilt:	280°
Pan/Tilt resolution:	8 or 16 bit
Protocol:	USITT DMX 512
Control channels:	8 or 14
Control Options:	DMX, Auto-trigger, Audio-trigger
Operation modes:	DMX, Master/slave, Stand-alone
Display:	4-digit LED
Programs:	6 built-in programs, 3 user editable programs up to 30 steps each locking 3-pin XLR
Data in/out:	40°C
Max. ambient oper. temperature:	2 pairs of 1/4 -turn locks
Mounting points:	2 x Omega holders
Fastening system:	8.8 kg
Weight:	2 frost filters, 2 Omega holders
Accessories:	

ArcWash 236





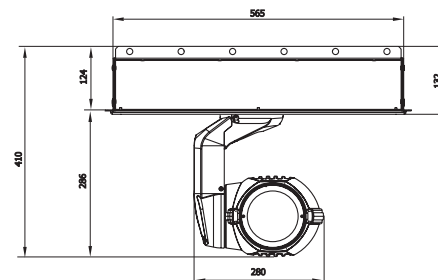


ArcWash Recessed 236

With its compact mounting box the ArcWash 236 Recessed allows moving light fixtures to be fitted where in the past there has simply been no space for such a fixture.

TECHNICAL SPECIFICATIONS:

Input Voltage:	100-240 V AC, 50/60 Hz
Maximum Power Consumption:	180 VA
Light source:	36 x K2 Luxeon LED's (12 Red, 12 Green, 12 Blue)
Optical system:	6° standard, 25° optional beam angle 2 additional frost filters included
Colours:	pre-programmed colours and rainbow effect white balance pre-programmed via LED control panel
Dimmer/Strobe:	electronic dimming 0-100% strobe effect max. 25 fps
Pan:	530°
Tilt:	280°
Pan/Tilt resolution:	8 or 16 bit
Protocol:	USITT DMX 512
Control channels:	8 or 14
Control Options:	DMX, Auto-trigger, Audio-trigger
Operation modes:	DMX, Master/slave, Stand-alone
Display:	4-digit LED
Programs:	6 built-in programs, 3 user editable programs up to 30 steps each
Data in/out:	locking 3-pin XLR
Max. ambient oper. temperature:	40°C
Mounting points:	4 mounting slots
Fastening system:	ceiling box
Weight:	8.8 kg (moving head), 7 kg ceiling box
Accessories:	2 frost filters
Ceiling box variants:	600 x 600 mm grid, 625 x 625 mm grid and version for plaster-boards



ArcSpot Recessed 170



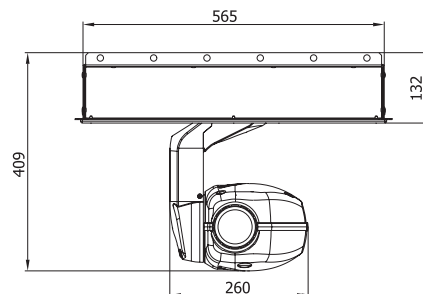


ArcSpot Recessed 170

This product is ideal for architectural lighting, bars, restaurants, clubs, churches, exhibit halls and for all other ceiling-mount applications. The ArcSpot Recessed 170 offers a new rotating gobo wheel with 7 gobos and open, a new colour wheel with 10 dichroic slots and open, remote focus facility, special colour and gobo changing system, remote lamp on/off and very fast movement. It utilises a long-life lampsource.

TECHNICAL SPECIFICATIONS:

Wiring options-EU model:	208/230/240 V AC, 50/60 Hz
Wiring options-US model:	100/120/208/230/240 V AC, 50/60 Hz
Power Consumption:	300 VA
Lamp:	Philips CDM-SA/T 150 W
Beam Angle:	19°
Focus:	motorized adjustable
Colour Wheel:	10 replaceable dichroic filters + white
Gobo Wheel:	7 replaceable gobos gobo rotation and indexing
Dimmer/Strobe:	full range dimming, variable strobe effect
Pan:	530°
Tilt:	280°
Pan/Tilt resolution:	8 or 16 bit
Protocol:	USITT DMX 512
Control channels:	10, 12 or 16 (4 DMX modes)
Control Options:	DMX, Auto-trigger, Audio-trigger
Operation modes:	DMX, Master/slave, Stand-alone
Display:	4-digit LED
Programs:	3 user editable programs up to 99 steps each
Data in/out:	Locking 3-pin XLR
Max. ambient oper. temp.:	40°C
Mounting points:	4 mounting slots
Fastening system:	ceiling box
Weight (head):	11 kg (EU version) 13.5 kg (US version)
Weight (Ceiling box):	7 kg
Accessories:	gobo-set, ceiling box
Ceiling box variants:	600 x 600 mm grid, 625 x 625 mm grid version for plaster-boards





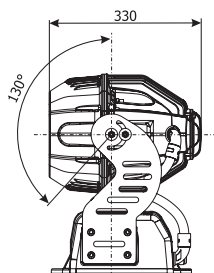
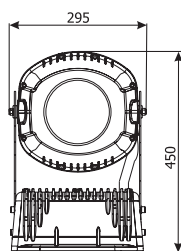


Ecolor 250

The Ecolor 250 includes a 250W discharge lamp, manual zoom with beam angle range from 8° to 22°, full CMY colour mixing. The dimmer unit allows the fixture very smooth micro-step driven dimming. The fixture is an ideal tool for outdoor architectural lighting.

TECHNICAL SPECIFICATIONS:

Wiring options-EU model:	208/230/240 V AC, 50/60 Hz
Wiring options-US model:	100/120/208/230/240 V AC, 50/60 Hz
Power Consumption:	450 VA
Lamp:	Philips MSD 250/2
Beam Angle:	8°-22° (manually adjustable)
CMY colour mixing system:	cyan 0-100%, magenta 0-100%, yellow 0-100%
Manually adjustable effects:	horizontal & vertical beam frost filter & 3200K CTF
Dimmer/Strobe:	full range dimming, variable strobe effect
Tilt:	130° (manually adjustable)
Protocol:	USITT DMX 512
Control channels:	6
Control Options:	DMX, Time-trigger, Light-trigger
Operation modes:	DMX, Master/slave, Stand-alone
Display:	4-digit LED
Programs:	3 user editable programs up to 99 steps each
Data in/out:	Locking 3-pin XLR
Max. ambient oper. temp.:	35°C
Mounting points:	2 mounting slots
Weight (head):	22 kg (EU version) 24.5 kg (US version)
Accessories:	remote control



Content

ArcSource 3, 6, 7 (MR16).....	5
ArcSource 12 (AR1-11).....	7
ArcLine 12, 18, 24, 36.....	9
ArcLine Optic 12, 18, 24, 36.....	11
ArcSource 12 SmartWhite (AR1-11).....	13
ArcLine Optic 12, 24, 36 SmartWhite.....	15
ArcSource 3/K2, 12/K2.....	17
ArcLink 3, ArcLink Optic 3.....	19
ArcLink 4, ArcLink Optic 4.....	21
ArcSource Inground 3, 6, 7.....	23
ArcSource Inground 12.....	25
ArcSource 1.....	27
ArcSource Outdoor 3, 6, 7.....	29
ArcSource Outdoor 12, 36.....	31
ArcSource Wall 3, Twin Wall 3.....	33
ArcLine Outdoor Optic 18, 24, 36, ArcLine Double Outdoor Optic 36, 48, 72.....	35
ArcLine Outdoor Optic 18, 24, 36/K2, ArcLine Double Outdoor Optic 36, 48, 72/K2.....	37
ArcControl 1024.....	39
ArcPower 9, 12.....	41
ArcPower 36, 72.....	43
ArcPower 144, 360.....	45
ArcPower 384 Rack-Mount.....	47
ArcPower 36/K2, 72/K2.....	49
ArcPower 16x6.....	51
ArcPower 36, 72, 144 SmartWhite.....	53
ArcPower 36/K2, 72/K2 SmartWhite.....	55
ArcSplitter 4, 2x12.....	57
ArcQube 144.....	59
ArcPad 3•48, ArcPower 48.....	61
ArcPad 3•48 Integral.....	63
ArcPAR 3, 12.....	65
ArcWash 236.....	67
ArcWash Recessed 236.....	69
ArcSpot Recessed 170.....	71
Ecolor 250.....	73

Dimensions and specifications are subjects to change without prior notice. For the latest information always contact your supplier.



ANOLIS is an architectural division of ROBE

HQ & Factory: ROBE lighting s. r. o., Hážovice 2090, 756 61 Rožnov p. Radhoštěm, Czech Republic, Tel.: +420 571 751 500, Fax: +420 571 626 337, E-mail: robe@robe.cz
UK: ROBE UK Ltd., Northampton, UK, Tel.: 01604 741000, E-mail: info@robeuk.com, **South-East Asia:** ROBE S.E.A., Singapore, Tel.: +65-8118 6665, E-mail: info@robe-sea.com
America: ROBE Lighting Inc., Sunrise, FL, USA, Tel.: +1 954 615 9100, E-mail: info@robelighting.com

February 2009

www.anolis.eu