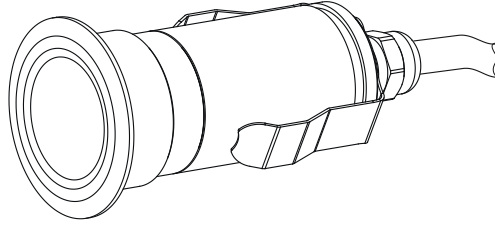


## User instructions

### ArcSource 1 Asymmetric

The ArcSource 1 Asymmetric generates colored light by means of Luxeon LED. The product was designed for exterior use and it is ideal for locations where signaling, directional or effect lighting is required.



#### Attention:

**Consider the respective national norms during the installation!**

Do not install the unit near naked flames

Avoid using the unit in locations subject to possible impacts

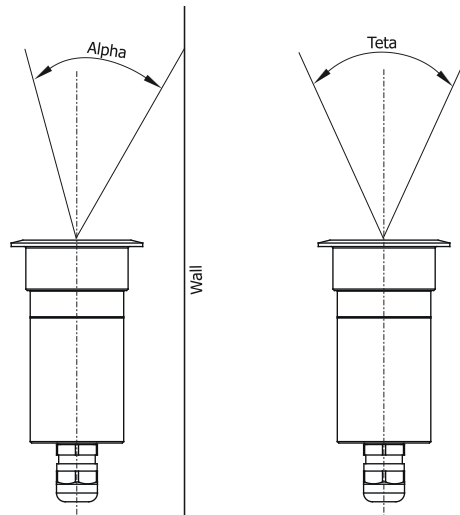
Do not attempt to dismantle or modify the unit

The unit is suitable for underwater installation up to depth of 5 m

#### Technical specifications:

|                                      |  |
|--------------------------------------|--|
| Input voltage:                       | 9-35V DC or 6-24V AC   |
| Maximum power consumption:           | 1.6 Watts  |
| Built-in ArcSource 1 driver:         | Operates on variable AC or DC input, keeps constant current to the LED |
| Operating ambient temp. range:       | -20°C/+40°C  |
| Cooling system:                      | conduct. cooling system  |
| LED device:                          | 1 W Luxeon   |
| Typical lumen maintenance:           | 70% @ 50,000 hours   |
| LED life expectancy:                 | more than 100,000 hours  |
| Glass cover:                         | 6 mm at clear tempered glass   |
| Total beam divergence (narrow beam): | Alpha=9°, Teta=8°  |
| Total beam divergence (medium beam): | Alpha=13°, Teta=14.5°  |
| Colour variants:                     | cool white (6500 K), warm white (3300K), red, green, blue, amber       |
| Construction:                        | Stainless steel top ange<br>Brass housing                              |
| Ingress Protection:                  | IP 68  |
| Wiring:                              | ØI ex Robust 210 cable ,2x0.5mm <sup>2</sup> , 1m long                 |
| Mounting depth:                      | 90 mm (plus cca 20 mm for bend of cable)                               |

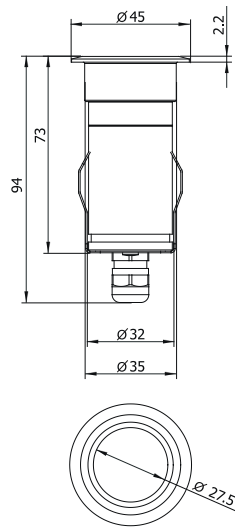
Typical total beam divergence:



**Installation:**

The ArcSource 1 can be arranged in any position orientation. Spring clips enable to hold the light in prepared positions in concrete, paving or walls. Connect to the end of the ArcSource's cable to the desired AC (DC ) power supply.

**Dimensions(mm):**



**Weight:**

300 g