

coolux[®]
MEDIA SYSTEMS

MEDIA MANAGER

The Pandoras Box Media Manager redefines realtime media editing and playback control. This standalone software allows synchronization and remote network control of all Pandoras Box media playback products.

The built-in sequences and cue based timeline interface enables you to control Media Servers, -Players as well as interfacing with all kinds of external controllers via TCP/IP, Serial RS232/422, SMPTE, DMX, Art-Net, analog and digital industrial sensors.

The Media Manager acts as both, a remote file manager and a master-timer, synchronizing any connected client system with sub-frame accuracy for demanding applications.

Similar to standard compositing and non-linear editing software solutions, the project orientated user interface is quick and easy to learn.

REALTIME EDITING.





MACBETH - KENNEDY CENTER, WASHINGTON D.C.

MEDIA MANAGER

WORKFLOW FEATURES

- USB Hardware Playback Unit with Jog/Shuttle Controller
- Control individual or large Arrays of Media Playback Systems
- Network Device Management
- Device control over TCP/IP, RS232/422, DMX & SMPTE

- Remote File-Management, automatic File-Upload
- Thumbnail Media- and Device Preview

- Cue based Timeline Sequencer
- Adaptive Frame-Synchronization
- Remote Playback control via:
TCP/IP, RS232/422, SMPTE, DMX, Art-Net & Sensors

- Device and Parameter Filtering
- Preset Storage
- Custom View Layout
- Device Grouping

PRODUCTS

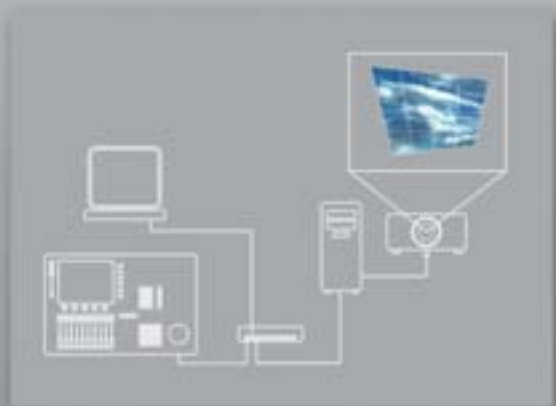
The Pandoras Box MediaManager is available in three upgradeable versions:

Pandoras Box MediaManager PRO
Featuring 8 separate timelines,
an extended playback unit and
a Jog/Shuttle controller

Pandoras Box MediaManager STD
Featuring 2 separate timelines and
a Jog/Shuttle controller

Pandoras Box MediaManager LT
Featuring a single timeline









GULFCUP OPENING 2007 - NEUMANN & MUELLER

PB AUTOMATION

Let the audience interact with the system. Create custom touch screen user interfaces based on your projects design.

PB Automation is a software development kit (SDK) for 3rd party integration. PB Automation can be easily implemented in Microsoft Powerpoint, Excel or Access macros.

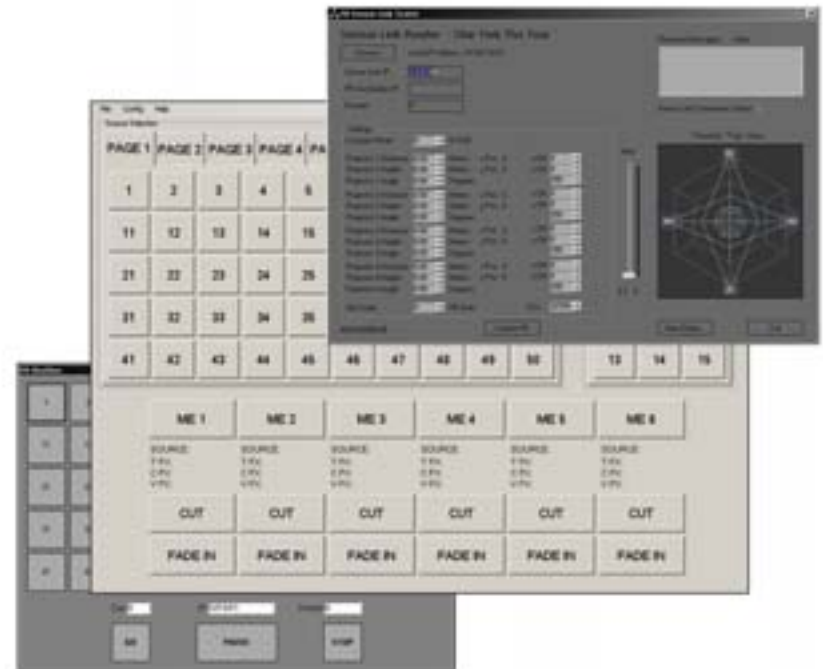
The SDK provides direct access to all sequence controls as well as all device parameters, effects and presets.

An unlimited amount of PB Automation clients can be created to talk to multiple Pandoras Box control systems.

With PB Automation custom integration with 3rd party software can quickly be realized with common programming languages such as Visual Basic scripts as well C# and C++.

coolux also offers individual training and custom applications on demand.

SOFTWARE DEVELOPMENT KIT.





STAR TREK THE TOUR - DELICATE PRODUCTIONS

SPARK

Pandoras Box Spark acts as a remote TCP/IP device that can be installed as a remote control service on any Windows XP PC.

The idea is to enable any coolux timeline to talk to spark and initiate local commands on the target computer.

Spark allows you to control most common command such as system shutdown, reboot, Wake on Lan, web browser control, keyboard and mouse events, as well as almost any 3rd party software control.

This is especially usefull if you need to interact with a Power-Point on a PC or an application that has no standard remote control feature.

The coolux website contains links for recent updates, programming hints and PB Spark applets.

SPARK IS FREE.





SIEMENS MEDICAL - FISCHER AND FRIENDS

ACCESSORIES

SMPTE Link

All Media Manager products with timelines can send and receive LTC SMTPE via the USB SMPTE Link interface. Supported frame rates for input and output are:
24 / 25 / 30 / 29.97 non-drop frame / 29.97 drop frame

SENSOR Link

The SENSOR Link is designed for custom installations that require integration of industrial encoders, distometers as well as analog potentiometers and contact closures. Cues and parameters can be triggered and controlled with any Pandoras Box Software.

SERIAL Link

To control matrix switchers, projectors or almost any other equipment over long distances, multiple bi-directional RS 232/422 ports as well a GPI I/O can be connected over ethernet to support multiple decentralized network units.

DMX Link

The DMX Link provides direct sequence and layer control from any common lighting controller.

The electronics fit completely into an original Neutrik™ plug communicates via USB2.0, is fully compatible with DMX512 and requires no external power supply.

DMX Link 8

The DMX Link 8 turns any Pandoras Box Controller into a full-featured lighting control system for up to 8 DMX lines per unit. Each DMX Link is built in a 19" rackmount chassis using only 1U. Pandoras Box systems are supplied with a library of hundreds of DMX fixture profiles.

- 10/100 Mbit Ethernet connection on Neutrik Ethercon
- 8x Bi-directional DMX ports on Female XLR5-Pin.
 - Can be used for DMX Input andOutput
- 2x DMX Input Ports on Male XLR5-pin



LUDWIG² - FESTSPIELHAUS NEUSCHWANSTEIN

coolux GmbH

Venloer Str. 703
50827 Cologne
Germany
Tel +49 221 569 10 890
Fax +49 221 569 10 896
info@coolux.de
www.coolux.de

coolux International

5320 Derry Avenue, Unit M
Agoura Hills, CA 91301
USA
Tel +1 818 597 9898
Fax +1 818 597 9889
info@coolux-us.com
www.coolux-us.com